

SMARTERAPP INTERFACE SPECIFICATION for ADMINISTRATION AND REGISTRATION TOOL UPLOAD FILE FORMATS

Authored by
American Institutes for Research

Accepted – 27 October 2014

Revision History

Revision Description	Author/Modifier	Date
0.1 - Initial Release (DRAFT)	Rami Levy	May 30, 2014
0.2 - Updates following feedback from Mike Powell. Changed Test Registration references to Administration and Registration Tool. Updated Figure 1 to latest version. Fixed inconsistencies in Table 11 and Table 17. Added Display Name column in Table 16.	Rami Levy	June 25, 2014
0.3 - Changed size of Role field to 45 in Table 15. Removed ResponsibleDistrictIdentifier from Eligibility file upload in Table 23. Changed LastOrSurname, FirstName to <i>Required</i> in Table 25. All identifiers changed to support up to 40 characters in length (per Brandt). Added CEDS reference to ParentExternalID in all tables that contain it.	Rami Levy	July 17, 2014
0.4 - Change format type for each upload file to fully support RFC-4180 (CSV).	Rami Levy	August 3, 2014
0.5 - Add two new accommodation codes as requested by Smarter Balanced: NEDS_TransDirs, NEA_NoiseBuf	Rami Levy	August 8, 2014
0.6 - Add support for multi-selection of NEDS and NEA. Color Contrast becomes Color Choices. Additional Print-on-Demand codes added. Print Size becomes Zoom. Streamlined Interface codes changed. "Filipino" changed to "Filipino (Ilokano and Tagalog)". Moved "Noise buffers: NEA_NoiseBuf" from NEA to NEDS. Changed translation labels and codes for dual translation glossary codes. Changed max size of Other accommodation field to 90 from 300.	Rami Levy	May 15, 2015
0.7 – Update for Task Order 15, Requirement 3.9 changes related to new formats implemented for better compatibility.	Rami Levy	Mar 15, 2016



Table of Contents

Purpose.....	3
References	3
Administration and Registration Tool Data Flow Overview.....	4
Administration and Registration Tool Data Format Upload Files	5
Administration and Registration Tool Data Format Conventions	5
Administration and Registration Tool Upload File Format Specification.....	6
Group Of States File Format	6
State File Format	7
Group of Districts File Format	8
District File Format	9
Group of Institutions File Format	11
Institution File Format	12
User File Format	13
Accommodations File Format	15
Student Group File Format	22
Eligibility File Format	23
Student File Format	25

Purpose

The purpose of this document is to provide a format specification describing the Administration and Registration Tool upload file formats.

In addition, the XSD and a sample XML file are included for reference.

This specification represents the combined work of Smarter Balanced and various vendors working on related contracts.

References

Ref	Reference	Author	Version
1	Common Education Data Standards (CEDS) specification (https://ceds.ed.gov/elements.aspx)	ceds.ed.gov	4.0
2	Smarter Balanced System Architecture and Technology Report (http://www.smarterapp.org/architecture.html)	Smarter Balanced	11-Jul- 2014
3	USPS: Official USPS Abbreviations (https://www.usps.com/send/official-abbreviations.htm)	USPS.com	2014
4	NCES - National Center for Education Statistics (http://nces.ed.gov)	nces.ed.gov	2012
5	IETF - Internet Engineering Task Force (IETF RFC 5322) (https://tools.ietf.org/html/rfc5322)	ietf.org	2008

Administration and Registration Tool Data Flow Overview

This component registers the student(s) for assessments and interacts with the Student Information System (SIS) to gather the student information and the accessibility profile, used by the Test Administration component. It must also manage staff identification for managing the assessment event.

The data upload interfaces include files for: students, users, student groups, institutions, groups of institutions, districts, groups of districts, states, groups of states, accommodations, and eligibility. Administration and Registration Tool imports these files (originating from the State Information Systems (SIS)) via User-Interface (UI) -based file upload mechanism.

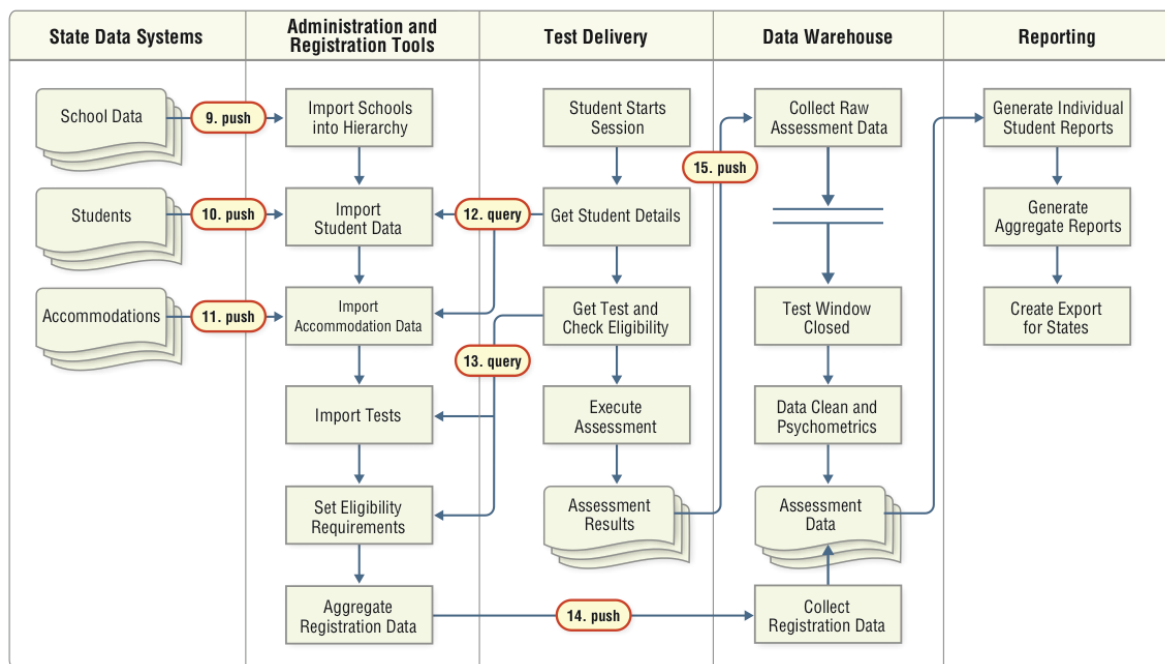


Figure 1: Architecture Report [2] Figure 8.1.2 Item Bank to Test Delivery

The Administration and Registration Tool system is shown in the second swim lane from the left, in Figure 1. Table 1 summarizes the elements in Figure 1 that are relevant to this document.

Diagram Element	Description
SIS	State Information System
APIP	Accessibility Portable Item Protocol - an IMS Global interoperability standard for student accessibility profiles. The APIP Standard provides assessment programs and question item developers a data model for standardizing the file format of digital test items.
Test Delivery	Test Delivery is responsible for the real time, interactive portion of a student assessment. Test Delivery holds a student's assessment result for a test opportunity until that opportunity has been completed.
Data Warehouse	The Data Warehouse is being developed for Smarter Balanced under Contract 15. The Test Integration component will deliver fully scale scored XML documents to the Data Warehouse that represents a complete test opportunity for a student.

Table 1: Component Definitions

Administration and Registration Tool Data Format Upload Files

Upload File	Description
GroupOfStates	Describes a globally unique grouping of state entities. Parented by a single top-level client.
State	State level entity information.
GroupOfDistricts	Describes a unique (within a state) grouping of district entities.
District	District level entity information.
GroupOfInstitutions	Describes a unique (within a state) grouping of institutions (e.g. schools).
Institution	Institution (school) level entity information.
User	User information file (non-student).
Accommodations	A set of assessment accommodations for a particular student and a particular subject.
StudentGroup	Describes a particular grouping of students in a particular school in a particular state.
Eligibility	Details a student's (explicit) eligibility for a particular test and version.
Student	Contains a student's information and demographics.

Administration and Registration Tool Data Format Conventions

Administration and Registration Tool accepts files in a variety of formats including CSV, XLS, XLSX, and TAB-delimited, and provides templates for each of the files for download from the UI. Following are the descriptions of each file upload and its fields.

Administration and Registration Tool Upload File Format Specification

Group Of States File Format

Format Characteristic	Value
File Format	CSV, TSV, XLS, XLSX
First Row Contains (verbatim)	Header row with the field names

Table 2: Group Of States Format Definition

Field Name	Display Name	Reference	Width	Required	Data Element Description	Data Type	Acceptable Values	Definitions	Example
GroupOfStatesIdentifier	Group Of States Identifier	N/A	40	Y	This is the unique identifier for Group of States	Alphanumeric xsd:token	One or more ASCII characters		321
GroupOfStatesName	Group Of States Name	N/A	50	Y	Full Group of States name	Alphanumeric/special xsd:token	One or more ASCII characters		Cascadia
ParentEntityType	Parent Entity Type	N/A	20	Y	Position of the parent element in the hierarchy	enum xsd:token	CLIENT		CLIENT
ParentExternalId	ParentEntity Id	CEDS ID 826 K12- >Organization	40	Y	A unique number or alphanumeric code assigned to an organization by a school, school system, a state, or other agency or entity.	Alphanumeric xsd:token	One or more printable ASCII characters	Based on CEDS <i>OrganizationIdentifier</i> but name changed for clarity of purpose.	18
ParentEntityName	N/A	N/A	50	N	A name assigned to an organization by a school, school system, a state, or other agency or entity.	Alphanumeric/special xsd:token	One or more ASCII characters		Smarter
Delete	Action	N/A	6	N	Delete this record iff value = DELETE	Alpha xsd:token	Yes <blank> or other value	DELETE: Delete record Any other value or <blank>: add/update as necessary	DELETE

Table 3: Administration and Registration Tool GroupOfStates Field Description

State File Format

Format Characteristic	Value
File Format	CSV, TSV, XLS, XLSX
First Row Contains (verbatim)	Header row with the field names
Index (key)	StateAbbreviation

Table 4: State Format Definition

Field Name	Display Name	Reference	Width	Required	Data Element Description	Type	Acceptable Values	Definitions	Example
StateAbbreviation	State Abbreviation	CEDS ID 267 K12 -> SEA -> Address USPS	2	Y	This is the unique two-character identifier for State	enum xsd:token	Two-character US State identifier as defined by CEDS and extended as follows: AA, AE, AP, TS, OT.	AA: Armed Forces Americas AE: Armed Forces Africa, Canada, Europe and Mideast AP: Armed Forces Pacific TS: Test State OT: Other	CA
StateName	State Name	N/A	50	Y	Full state name	Alpha xsd:token	One or more printable ASCII characters for State name, spaces and commas allowed.		California
ParentEntityType	Parent Entity Type	N/A	20	Y	Position of the parent element in the hierarchy	enum xsd:token	CLIENT GROUPOFSTATES		CLIENT
ParentExternalId	ParentEntity Id	CEDS ID 826 K12->Organization	40	Y	A unique number or alphanumeric code assigned to an organization by a school, school system, a state, or other agency or entity.	Alphanum xsd:token	One or more printable ASCII characters	Based on CEDS <i>OrganizationIdentifier</i> but name changed for clarity of purpose.	67817
ParentEntityName	N/A	N/A	50	N	A name assigned to an organization by a school, school system, a state, or other agency or entity.	Alphanum xsd:token	One or more printable ASCII characters		StateGroup

Delete	Action	N/A	6	N	Delete this record iff value = DELETE	Alpha xsd:token	Yes <blank> or other value	DELETE: Delete record Any other value or <blank>: add/update as necessary	DELETE
--------	--------	-----	---	---	---------------------------------------	--------------------	-------------------------------	---	--------

Table 5: Administration and Registration Tool State Field Description

Group of Districts File Format

Format Characteristic	Value
File Format	CSV, TSV, XLS, XLSX
First Row Contains (verbatim)	Header row with the field names
Index (key)	GroupOfDistrictsIdentifier + StateAbbreviation

Table 6: Group Of Districts Format Definition

Field Name	Display Name	Reference	Width	Required	Data Element Description	Type	Acceptable Values	Definitions	Example
GroupOfDistrictsIdentifier	Group Of Districts Identifier	N/A	40	Y	This is the unique identifier for Group of Districts	Alphanum xsd:token	One or more printable ASCII characters		321
GroupOfDistrictsName	Group Of Districts Name	N/A	100	Y	Group of Districts name	Alphanumeric/ special xsd:token	One or more printable ASCII characters		Northern California
ParentEntityType	Parent Entity Type	N/A	20	Y	Position of the parent element in the hierarchy	enum xsd:token	STATE, GROUPOFSTATES, or CLIENT		STATE
ParentExternalId	ParentEntity Id	CEDS ID 826 K12->Organization	40	Y	A unique number or alphanumeric code assigned to an organization by a school, school system, a state, or other agency or entity.	Alphanum xsd:token	One or more printable ASCII characters	Based on CEDS <i>OrganizationIdentifier</i> but name changed for clarity of purpose.	321

StateAbbreviation	State Abbreviation	CEDS ID 267 K12 -> SEA -> Address USPS	2	Y	This is the unique two-character identifier for State	enum xsd:token	Two-character US State identifier as defined by CEDS and extended as follows: AA, AE, AP, TS, OT.	AA: Armed Forces Americas AE: Armed Forces Africa, Canada, Europe and Mideast AP: Armed Forces Pacific TS: Test State OT: Other	CA
ParentEntityName	N/A	N/A	50	N	A name assigned to an organization by a school, school system, a state, or other agency or entity.	Alphanum xsd:token	One or more printable ASCII characters		Virginia
Delete	Action	N/A	6	N	Delete this record iff value = DELETE	Alpha xsd:token	Yes <blank> or other value	DELETE: Delete record Any other value or <blank>: add/update as necessary	DELETE

Table 7: Group of Districts Field Description

District File Format

Format Characteristic	Value
File Format	CSV, TSV, XLS, XLSX
First Row Contains (verbatim)	Header row with the field names
Index (key)	LocalEducationAgencyIdentifier+StateAbbreviation

Table 8: District Format Definition

Field Name	Display Name	Reference	Width	Required	Data Element Description	Type	Acceptable Values	Definitions	Example
LocalEducationAgencyIdentifier	District ID	CEDS ID 1068 K12 -> LEA -> Identification	40	Y	A unique number or alphanumeric code assigned to a local education agency by a school system, a state, or	Alphanum xsd:token	One or more ASCII characters		14

Field Name	Display Name	Reference	Width	Required	Data Element Description	Type	Acceptable Values	Definitions	Example
					other agency or entity.				
OrganizationName	District Name	CEDS ID 204 K12 -> LEA -> Identification	60	Y	District Name	Alphanumeric/special xsd:token	One or more ASCII characters		Oakland Unified
NCESLEAID	NCES LEA ID	NCES ID	40	N	Unique nationwide district identifier	Numeric xsd:integer	NCES ID - http://nces.ed.gov	National Center for Education Statistics Local Education Entity Identifier	1200180
ParentEntityType	Parent Entity Type	N/A	20	Y	Position of the parent element in the hierarchy	enum xsd:token	GROUPOFDISTRICTS STATE GROUPOFSTATES CLIENT		STATE
ParentExternalId	ParentEntity Id	CEDS ID 826 K12->Organization	40	Y	A unique number or alphanumeric code assigned to an organization by a school, school system, a state, or other agency or entity.	Alphanum xsd:token	One or more printable ASCII characters	Based on CEDS <i>OrganizationIdentifier</i> but name changed for clarity of purpose.	7162
StateAbbreviation	State Abbreviation	CEDS ID 267 K12 -> SEA -> Address USPS	2	Y	This is the unique two-character identifier for State	enum xsd:token	Two-character US State identifier as defined by CEDS and extended as follows: AA, AE, AP, TS, OT.	AA: Armed Forces Americas AE: Armed Forces Africa, Canada, Europe and Mideast AP: Armed Forces Pacific TS: Test State OT: Other	CA
ParentEntityName	N/A	N/A	100	N	A name assigned to an organization by a school, school system, a state, or other agency or entity.	Alphanum xsd:token	One or more printable ASCII characters		DistGroup1
Delete	Action	N/A	6	N	Delete this record iff value = DELETE	Alpha xsd:token	Yes <blank> or other value	DELETE: Delete record Any other value or <blank>: add/update as necessary	DELETE

Table 9: District Field Description

Group of Institutions File Format

Format Characteristic	Value
File Format	CSV, TSV, XLS, XLSX
First Row Contains (verbatim)	Header row with the field names
Index (key)	GroupOfInstitutionsIdentifier + StateAbbreviation

Table 10: GroupOfInstitutions Format Definition

Field Name	Display Name	Reference	Width	Required	Data Element Description	Type	Acceptable Values	Definitions	Examples
GroupOfInstitutionsIdentifier	Group Of Institutions Identifier	N/A	40	Y	This is the unique identifier for Group Of Institutions.	Alphanum xsd:token	One or more printable ASCII characters		42
GroupOfInstitutionsName	Group Of Institutions Name	N/A	60	Y	Group of Institutions Name	Alphanumeric/special xsd:token	One or more printable ASCII characters		LA County Schools
ParentEntityType	Parent Entity Type	N/A	20	Y	Position of the parent element in the hierarchy	enum xsd:token	DISTRICT, GROUPOFDISTRICTS, STATE, GROUPOFSTATES, or CLIENT		STATE
ParentExternalId	Parent Entity Id	CEDS ID 826 K12->Organization	40	Y	A unique number or alphanumeric code assigned to an organization by a school, school system, a state, or other agency or entity.	Alphanum xsd:token	One or more printable ASCII characters	Based on CEDS <i>OrganizationIdentifier</i> but name changed for clarity of purpose.	6158191
StateAbbreviation	State Abbreviation	CEDS ID 267 K12 -> SEA -> Address USPS	2	Y	This is the unique two-character identifier for State	enum xsd:token	Two-character US State identifier as defined by CEDS and extended as follows: AA, AE, AP, TS, OT.	AA: Armed Forces Americas AE: Armed Forces Africa, Canada, Europe and Mideast AP: Armed Forces Pacific TS: Test State OT: Other	CA

Field Name	Display Name	Reference	Width	Required	Data Element Description	Type	Acceptable Values	Definitions	Examples
ParentEntityName	N/A	N/A	100	N	A name assigned to an organization by a school, school system, a state, or other agency or entity.	Alphanum xsd:token	One or more printable ASCII characters		District1
Delete	Action	N/A	6	N	Delete this record iff value = DELETE	Alpha xsd:token	Yes <blank> or other value	DELETE: Delete record Any other value or <blank>: add/update as necessary	DELETE

Table 11: Group of Institutions Field Description

Institution File Format

Format Characteristic	Value
File Format	CSV, TSV, XLS, XLSX
First Row Contains (verbatim)	Header row with the field names
Index (key)	SchoolIdentifier + StateAbbreviation

Table 12: Institution Format Definition

Field Name	Display Name	Reference	Width	Required	Data Element Description	Type	Acceptable Values	Definitions	Examples
SchoolIdentifier	School ID	CEDS ID 1069 K12 -> K12 School -> Identification	20	Y	A unique number or alphanumeric code assigned to an institution by a school, school system, a state, or other agency or entity.	Alphanum xsd:token	One or more printable ASCII characters		917862561
NameOfInstitution	School Name	CEDS ID 191 K12 -> K12 School -> Identification	60	Y	Institution Name	Alphanumeric /special xsd:token	One or more printable ASCII characters		Lake Los Angeles Elementary
ParentEntityType	Parent Entity Type	N/A	20	Y	Position of the parent element in the hierarchy	enum xsd:token	GROUPOFINSTITUTIONS DISTRICT GROUPOFDISTRICTS STATE GROUPOFSTATES CLIENT		STATE
NCESInstitutionId	NCES Institution Id	NCES	40	Y	Unique nationwide identifier	Numeric xsd:integer	NCES ID - http://nces.ed.gov		

Field Name	Display Name	Reference	Width	Required	Data Element Description	Type	Acceptable Values	Definitions	Examples
ParentExternalId	ParentEntity Id	CEDS ID 826 K12->Organization	40	Y	A unique number or alphanumeric code assigned to an organization by a school, school system, a state, or other agency or entity.	Alphanumeric xsd:token	One or more printable ASCII characters	Based on CEDS <i>OrganizationId</i> identifier but name changed for clarity of purpose.	52619
ParentEntityName	N/A	N/A	100	N	A name assigned to an organization by a school, school system, a state, or other agency or entity.	Alphanumeric xsd:token	One or more printable ASCII characters		InstGroup
StateAbbreviation	State Abbreviation	CEDS ID 267 K12 -> SEA -> Address USPS	2	Y	This is the unique two-character identifier for State	enum xsd:token	Two-character US State identifier as defined by CEDS and extended as follows: AA, AE, AP, TS, OT.	AA: Armed Forces Americas AE: Armed Forces Africa, Canada, Europe and Mideast AP: Armed Forces Pacific TS: Test State OT: Other	CA
Delete	Action	N/A	6	N	Delete this record iff value = DELETE	Alpha xsd:token	Yes <blank> or other value	DELETE: Delete record Any other value or <blank>: add/update as necessary	DELETE

Table 13: Institution Field Definition

User File Format

Format Characteristic	Value
File Format	CSV, TSV, XLS, XLSX

First Row Contains (verbatim)	Header row with the field names
Index (key)	ElectronicMailAddress

Table 14: User Format Definition

Field Name	Display Name	Reference	Width	Required	Data Element Description	Type	Acceptable Values	Definitions	Examples
FirstName	First Name	CEDS ID 115 K12 -> K12 Staff -> Identity -> Name	35	Y	First Name of the user	Alphanumeric/special xsd:token	One or more printable ASCII characters		John
LastOrSurname	Last Name	CEDS ID 172 K12 -> K12 Staff -> Identity -> Name	35	Y	Last Name of the user	Alphanumeric/special xsd:token	One or more printable ASCII characters		Public
ElectronicMailAddress	Email	CEDS ID 88 K12 -> K12 Staff -> Contact -> Email	128	Y	Email address of the user	Alphanumeric+@ xsd:token	Follow IETF RFC 5322 https://tools.ietf.org/html/rfc5322	Unique identifier of the user.	jpublic@verygoodschool.org
TelephoneNumber	Phone	CEDS ID 279 K12 -> K12 Staff -> Contact -> Telephone	24	N	The telephone number including the area code, and extension, if applicable.	Numeric+dash xsd:string	XXX-XXX-XXXX xNNNNNN		305-867-9309
Role	Role	N/A	45	Y	Role assigned to the user.	Alpha xsd:token	Spaces allowed	Full user role name	Test Administrator
AssociatedEntityID	Responsible Entity ID	N/A	40	Y	The identifier of the associated entity	Alphanum xsd:token	One or more printable ASCII characters		187261
AssociatedEntityName	N/A	N/A	100	N	A name assigned to an organization by a school, school system, a state, or other agency or entity.	Alphanum xsd:token	One or more printable ASCII characters		School1
Level	Responsible Entity Type	N/A	50	Y	Hierarchy level of the entity associated with this user and role	enum xsd:token	CLIENT GROUPOFSTATES STATE GROUPOFDISTRICTS DISTRICT GROUPOFINSTITUTIONS INSTITUTION		INSTITUTION

Field Name	Display Name	Reference	Width	Required	Data Element Description	Type	Acceptable Values	Definitions	Examples
StateAbbreviation	State Abbreviation	CEDS ID 267 K12 -> SEA -> Address USPS	2	Y	This is the unique two-character identifier for State	enum xsd:token	Two-character US State identifier as defined by CEDS and extended as follows: AA, AE, AP, TS, OT.	AA: Armed Forces Americas AE: Armed Forces Africa, Canada, Europe and Mideast AP: Armed Forces Pacific TS: Test State OT: Other	CA
Delete	Action	N/A	6	N	Delete this record iff value = DELETE	Alpha xsd:token	Yes <blank> or other value	DELETE: Delete record Any other value or <blank>: add/update as necessary	DELETE

Table 15: User Field Definitions

Accommodations File Format (LEGACY)

Format Characteristic	Value
File Format	CSV, TSV, XLS, XLSX
First Row Contains (verbatim)	Header row with the field names
Index (key)	StudentIdentifier + StateAbbreviation + Subject

Table 16: Accommodations Format Definition

Field Name	Display name	Reference	Width	Required	Data Element Description	Type	Acceptable Values	Definitions	Examples
StudentIdentifier	Student Identifier	CEDS ID 1071 K12->K12 Student->Identity->Identification	40	Y	State assigned student Identifier which is unique within that state. Every student should have a unique SSID within their state.	Alphanumeric xsd:token	One or more printable ASCII characters	FT changed this to SSID	71761937

Field Name	Display name	Reference	Width	Required	Data Element Description	Type	Acceptable Values	Definitions	Examples
StateAbbreviation	State Abbreviation	CEDS ID 267 K12 -> SEA -> Address USPS	2	Y	This is the unique two-character identifier for State	enum xsd:token	Two-character US State identifier as defined by CEDS and extended as follows: AA, AE, AP, TS, OT.	AA: Armed Forces Americas AE: Armed Forces Africa, Canada, Europe and Mideast AP: Armed Forces Pacific TS: Test State OT: Other	CA
Subject	Subject	N/A	20	Y	The subject for which the accommodations apply	Alphanum xsd:token	One or more printable ASCII characters		ELA
AmericanSignLanguage	American Sign Language	N/A	10	N	Allows students to view test content translated into ASL by a human signer.	enum xsd:token	TDS_ASLO TDS_AS1	Do not show ASL videos: TDS_ASLO Show ASL videos: TDS_AS1	TDS_AS1
ColorChoices	Color Choices	N/A	40	N	By default, tests are presented with black text on a white background. Students who require a different combination of text and background should be assigned the appropriate setting.	enum xsd:token	TDS_CC0 TDS_CCInvert TDS_CCMagenta TDS_CCMedGrayLtGray TDS_CCYellowB	Black on White: TDS_CC0 Reverse Contrast: TDS_CCInvert Black on Rose: TDS_CCMagenta Medium Gray on Light Gray: TDS_CCMedGrayLtGray Yellow on Blue: TDS_CCYellowB	TDS_CC0
ClosedCaptioning	Closed Captioning	N/A	20	N	The Closed Captioning accommodation will not be available for the Field Test; however, for students who would typically have received this accommodation, the Closed Captioning setting can still be selected in TIDE. For the Field Test only, selecting this setting will suppress the Listening portion of the ELA test.	enum xsd:token	TDS_ClosedCap0 TDS_ClosedCap1	Closed Captioning Not Available: TDS_ClosedCap0 Closed Captioning Available: TDS_ClosedCap1	TDS_ClosedCap0
Language	Language	N/A	20	N	All tests are presented in English. Students who qualify for a Spanish language translation will view items in both English and Spanish (stacked format). Students who require tests in braille should have the braille option selected.	enum xsd:token	ENU ENU-Braille ESN	English: ENU Braille: ENU-Braille Spanish (Stacked Translation): ESN (Math only)	ENU
Masking	Masking	N/A	15	N	Allows blocking of content that is not of immediate need or that may be distracting to the student.	enum xsd:token	TDS_Masking0 TDS_Masking1	Masking Not Available: TDS_Masking0 Masking Available: TDS_Masking1	TDS_Masking0

Field Name	Display name	Reference	Width	Required	Data Element Description	Type	Acceptable Values	Definitions	Examples
PermissiveMode	Permissive Mode	N/A	10	N	Permissive mode should be enabled for students who require access to accessibility software in order to interact with the test (e.g., screen readers, magnifiers, etc.). When permissive mode is disabled, the only application that can be open on the computer is the secure browser.	enum xsd:token	TDS_PMO TDS_PM1	Permissive Mode Disabled: TDS_PMO Permissive Mode Enabled: TDS_PM1	TDS_PMO
PrintOnDemand	Print On Demand	N/A	40	N	Sets student's print on demand accommodation. Allows student to request printing of stimuli.	enum xsd:token	TDS_PoD0 TDS_PoD_Stim TDS_PoD_Item TDS_PoD_Stim&TDS_PoD_Item	None: TDS_PoD0 Stimuli: TDS_PoD_Stim	TDS_PoD0
Zoom	Zoom	N/A	10	N	Sets student's print size accommodation. The print size the student should have when starting a test. The selected print size becomes the default for all items in that student's test. * The default print size for all tests is 14 pt. * The default font for ELA tests is Times New Roman. * The default font for mathematics tests is Verdana.	enum xsd:token	TDS_PS_L0 TDS_PS_L1 TDS_PS_L2 TDS_PS_L3 TDS_PS_L4	No default zoom applied: TDS_PS_L0 Level 1: TDS_PS_L1 Level 2: TDS_PS_L2 Level 3: TDS_PS_L3 Level 4: TDS_PS_L4	TDS_PS_L0
StreamlinedInterface	Streamlined Interface	N/A	20	N	By default, all tests use the standard interface. This interface is compatible with all supported desktops and tablets. The streamlined interface presents the test in an alternate, simplified format in which the items are displayed below the stimuli. All tool and navigation buttons are on the bottom of the screen. Important: The streamlined interface is not intended to be tablet compatible.	enum xsd:token	TDS_SLM0 TDS_SLM1	Standard: TDS_SLM0 (DEFAULT, off) Streamlined: TDS_SLM1 (On)	TDS_SLM0
TexttoSpeech	Text to Speech	N/A	40	N	Sets student's text to speech accommodation. Students with this test setting enabled may listen to the read-aloud of the items and/or stimuli in the assessment. Note: Text-to-Speech is not available in Spanish.	enum xsd:token	TDS_TTS0 TDS_TTS_Item TDS_TTS_Stim TDS_TTS_Stim&TDS_TTS_Item	None: TDS_TTS0 Items Only: TDS_TTS_Item (ELA only) Stimuli Only: TDS_TTS_Stim (ELA only) Stimuli and Items: TDS_TTS_Stim&TDS_TTS_Item	TDS_TTS0

Field Name	Display name	Reference	Width	Required	Data Element Description	Type	Acceptable Values	Definitions	Examples
Translation (Glossary)	Translation (Glossary)	N/A	50	N	<p>Sets student's glossary accommodation. Students can open a glossary to view terms presented on the test that may be unfamiliar to them.</p> <p>By design, all students can access the English glossary word list as a universal tool, unless this is disabled ("None") or overridden by another language.</p> <p>* If a combination glossary is selected (e.g., English and Arabic or English and Russian), then the student will have access to both.</p> <p>* If a single glossary is selected (e.g., Mandarin), then the student will only have access to that glossary. The English glossary will not be available.</p> <p>Note: The English glossary is available for both ELA and mathematics tests. Translated glossaries are available for mathematics tests only.</p> <p>This field is multi-select:</p> <ul style="list-style-type: none"> - The value "None" is mutually exclusive of any other values. - if you select "None" no other value can be selected - if you select one or more values other than None, None cannot be selected 	enum xsd:token	TDS_WL_Glossary TDS_WL_ArabicGloss TDS_WL_CantoneseGloss TDS_WL_ESNGlossary TDS_WL_KoreanGloss TDS_WL_MandarinGloss TDS_WL_PunjabiGloss TDS_WL_RussianGloss TDS_WL_TagalGloss TDS_WL_UkrainianGloss TDS_WL_VietnameseGloss TDS_WL_ArabicGloss&TDS_WL_Glossary TDS_WL_CantoneseGloss&TDS_WL_Glossary TDS_WL_ESNGlossary&TDS_WL_Glossary TDS_WL_KoreanGloss&TDS_WL_Glossary TDS_WL_MandarinGloss&TDS_WL_Glossary TDS_WL_PunjabiGloss&TDS_WL_Glossary TDS_WL_RussianGloss&TDS_WL_Glossary TDS_WL_TagalGloss&TDS_WL_Glossary TDS_WL_UkrainianGloss&TDS_WL_Glossary TDS_WL_VietnameseGloss&TDS_WL_Glossary	English: TDS_WL_Glossary Arabic: TDS_WL_ArabicGloss Cantonese: TDS_WL_CantoneseGloss Spanish: TDS_WL_ESNGlossary Korean: TDS_WL_KoreanGloss Mandarin: TDS_WL_MandarinGloss Punjabi: TDS_WL_PunjabiGloss Russian: TDS_WL_RussianGloss Filipino: TDS_WL_TagalGloss Ukrainian: TDS_WL_UkrainianGloss Vietnamese: TDS_WL_VietnameseGloss Arabic & English: TDS_WL_ArabicGloss&TDS_WL_Glossary Cantonese & English: TDS_WL_CantoneseGloss&TDS_WL_Glossary Spanish & English: TDS_WL_ESNGlossary&TDS_WL_Glossary Korean & English: TDS_WL_KoreanGloss&TDS_WL_Glossary Mandarin & English: TDS_WL_MandarinGloss&TDS_WL_Glossary Punjabi & English: TDS_WL_PunjabiGloss&TDS_WL_Glossary Russian & English: TDS_WL_RussianGloss&TDS	TDS_WLO

Field Name	Display name	Reference	Width	Required	Data Element Description	Type	Acceptable Values	Definitions	Examples
							TDS_WLO	_WL_Glossary Filipino (Ilokano and Tagalog) and English: TDS_WL_TagalGloss&TDS_WL_Glossary Ukrainian & English: TDS_WL_UkrainianGloss&TDS_WL_Glossary Vietnamese & English: TDS_WL_VietnameseGloss&TDS_WL_Glossary None: TDS_WLO	
NonEmbeddedDesignatedSupports	Non Embedded Designated Supports	N/A	40	N	Some designated supports may need to be provided to students during testing. These should be provided only to those students who are unable to use the embedded test settings. This field is multi-select: - The value "None" is mutually exclusive of any other values. - if you select "None" no other value can be selected - if you select one or more values other than None, None cannot be selected	enum xsd:token	NEDSO NEDS_BD NEDS_CC NEDS_CO NEDS_Mag NEDS_NoiseBuf NEDS_RA_Items NEDS_SC_Items NEDS_SS NEDS_TArabic NEDS_TCantonese NEDS_TFilipino NEDS_TKorean NEDS_TMandarin NEDS_TPunjabi NEDS_TRussian NEDS_TSpanish NEDS_TUkrainian NEDS_TVietnamese NEDS_TransDirs	**** Non-Embedded Designated Supports: ELA **** None: NEDSO Bilingual Dictionary: NEDS_BD Color Contrast: NEDS_CC Color Overlay: NEDS_CO Magnification: NEDS_Mag Noise buffers: NEDS_NoiseBuf Read Aloud Items: NEDS_RA_Items Scribe Items (Non-Writing): NEDS_SC_Items Separate Setting: NEDS_SS **** Non-Embedded Designated Supports: Math **** None: NEDSO Color Contrast: NEDS_CC Color Overlay: NEDS_CO Magnification: NEDS_Mag Read Aloud Items: NEDS_RA_Items Scribe Items (Non-Writing): NEDS_SC_Items Separate Setting: NEDS_SS Glossary - Arabic: NEDS_TArabic	NEDS_CO

Field Name	Display name	Reference	Width	Required	Data Element Description	Type	Acceptable Values	Definitions	Examples
								Glossary - Cantonese: NEDS_TCantonese Glossary - Filipino (Ilokano and Tagalog): NEDS_TFilipino Glossary - Korean: NEDS_TKorean Glossary - Mandarin: NEDS_TMandarin Glossary - Punjabi: NEDS_TPunjabi Glossary - Russian: NEDS_TRussian Glossary - Spanish: NEDS_TSpanish Glossary - Ukrainian: NEDS_TUkrainian Glossary - Vietnamese: NEDS_TVietnamese Translated test directions: NEDS_TransDirs	
NonEmbeddedAccommodations	Non Embedded Accommodations	N/A	20	N	Some accommodations may need to be provided to students during testing. These should be provided only to those students who are unable to use the embedded test accommodations.	enum xsd:token	NEAO NEA_AR NEA_RA_Stimuli NEA_SC_WritItems NEA_STT NEA_Abacus NEA_Calc NEA_MT	None: NEAO Alternate Response Options: NEA_AR Read Aloud Stimuli: NEA_RA_Stimuli (ELA only) Scribe Items (Writing): NEA_SC_WritItems (ELA only) Speech-to-Text: NEA_STT Abacus: NEA_Abacus (Math only) Calculator: NEA_Calc (Math only) Multiplication Table: NEA_MT (Math only)	NEA_STT
Other	Other	N/A	90	N	Other designated supports or accommodations that are not listed here.	Alphanum xsd:token	One or more printable ASCII characters		Student requires soothing music

Table 17: Accommodations Field Definitions

Designated Supports and Accommodations File Format (NEW as of March 2016)

Format Characteristic	Value
File Format	CSV, TSV, XLS, XLSX
First Row Contains (verbatim)	Header row with the field names
Index (key)	StudentIdentifier + StateAbbreviation + Subject

Table 18: Designated Supports and Accommodations Format Definition

Field Name	Display name	Reference	Width	Required	Data Element Description	Type	Acceptable Values	Definitions	Examples
StudentIdentifier	N/A	CEDS ID 1071 K12->K12 Student->Identif- >Identification	40	Y	State assigned student Identifier which is unique within that state. Every student should have a unique SSID within their state.	Alphanumeric xsd:token	One or more printable ASCII characters	FT changed this to SSID	71761937
StateAbbreviation	N/A	CEDS ID 267 K12 -> SEA -> Address USPS	2	Y	This is the unique two-character identifier for State	enum xsd:token	Two-character US State identifier as defined by CEDS and extended as follows: AA, AE, AP, TS, OT.	AA: Armed Forces Americas AE: Armed Forces Africa, Canada, Europe and Mideast AP: Armed Forces Pacific TS: Test State OT: Other	CA
Subject	N/A	N/A	20	Y	The subject for which the accommodations apply	Alphanumeric xsd:token	One or more printable ASCII characters		ELA
AccommodationCodes	N/A	ISAAP Accessibility Feature Codes (19-Nov-2015)	32767	Y	Consolidate all accessibility codes into one field (column) for both import and export formats. For EditResource accommodation resource types, the format shall be Code(value). Valid values for value are alphanumeric characters, spaces, dashes, and periods. Specifically, A-Z,a-z,0-9,<space>,-,...	Alphanumeric xsd:token	This single-field-format will consist of a pipe-delimited list of (unique) accommodation codes for SingleSelect and Multiselect accommodation resource types.	Valid codes include all valid accommodation codes. Can contain any number of custom fields ("EditResource" accommodations).	TDS_ASLO TDS_CCMagenta TDS_ClosedCap1 TDS_PoD_Stim EditResource1(fluffy bunny) other (blue light needed)

Table 19: Designated Supports and Accommodations File Format

Student Group File Format

Format Characteristic	Value
File Format	CSV, TSV, XLS, XLSX
First Row Contains (verbatim)	Header row with the field names
Index (key)	StudentIdentifier + StateAbbreviation + StudentGroupName + SchoolIdentifier

Table 20: Student Group Format Definition

Field Name	Display Name	Reference	Width	Required	Data Element Description	Type	Acceptable Values	Definitions	Examples
SchoolIdentifier	School ID	CEDS ID 1069 CEDS ID 1071 K12 -> K12 School -> Identification	40	Y	A unique number or alphanumeric code assigned to an institution by a school, school system, a state, or other agency or entity.	Alphanumeric xsd:token	One or more printable ASCII characters		71561003
ElectronicMailAddress	Email	CEDS ID 88 K12 -> K12 Staff - > Contact -> Email	50	Y	Email address of owner of Student Group, who must be a user in the system	Alphanumeric+@ xsd:token	One or more printable ASCII characters		brennanf@district23.org
StudentGroupName	Student Group Name	N/A	50	Y		Alphanumeric xsd:token	One or more printable ASCII characters		Brennan Math
StudentIdentifier	Student ID	CEDS ID 1071 K12->K12 Student->Identity- >Identification	40	Y	State assigned student Identifier which is unique within that state. Every student should have a unique SSID within their state.	Alphanumeric xsd:token	One or more printable ASCII characters		7351511
StateAbbreviation	State Abbreviation	CEDS ID 267 K12 -> SEA -> Address USPS	2	Y	This is the unique two-character identifier for State	enum xsd:token	Two-character US State identifier as defined by CEDS and extended as follows: AA, AE, AP, TS, OT.	AA: Armed Forces Americas AE: Armed Forces Africa, Canada, Europe and Mideast AP: Armed Forces Pacific TS: Test State	CA

Field Name	Display Name	Reference	Width	Required	Data Element Description	Type	Acceptable Values	Definitions	Examples
								OT: Other	
ResponsibleDistrictIdentifier	Responsible District Identifier	CEDS ID 637 K12 -> K12 Student -> Enrollment	40	Y	The district responsible for specific educational services and/or instruction of the student.	Alphanumeric xsd:token	One or more printable ASCII characters		276150918
Delete	Action	N/A	6	N	Delete this record iff value = DELETE	Alpha xsd:token	Yes <blank> or other value	DELETE: Delete record Any other value or <blank>: add/update as necessary	DELETE

Table 21: Student Group Field Definitions

Eligibility File Format

Format Characteristic	Value
File Format	CSV, TSV, XLS, XLSX
First Row Contains (verbatim)	Header row with the field names
Index (key)	StudentIdentifier + StateAbbreviation + TestName + TestVersion

Table 22: Eligibility Format Definition

Field Name	Display Name	Reference	Width	Required	Data Element Description	Type	Acceptable Values	Definitions	Examples
StudentIdentifier	Student ID	CEDS ID 1071 K12->K12 Student->Identity->Identification	40	Y	State assigned student Identifier which is unique within that state. Every student should have a unique SSID within their state.	Alphanumeric xsd:token	One or more printable ASCII characters		7162817624

Field Name	Display Name	Reference	Width	Required	Data Element Description	Type	Acceptable Values	Definitions	Examples
AssessmentAdministrationAssessmentFamily	Assessment Administration Assessment Family	CEDS ID 967 K12 -> Assessments -> Assessment Administration	60	Y	An identifier for the test administration program	Alphanum xsd:token	One or more printable ASCII characters		FCAT
StateAbbreviation	State Abbreviation	CEDS ID 267 K12 -> SEA -> Address USPS	2	Y	This is the unique two-character identifier for State	enum xsd:token	Two-character US State identifier as defined by CEDS and extended as follows: AA, AE, AP, TS, OT.	AA: Armed Forces Americas AE: Armed Forces Africa, Canada, Europe and Mideast AP: Armed Forces Pacific TS: Test State OT: Other	CA
Subject	Subject	N/A	20	Y	The subject of the assessment the student is eligible to take	Alphanum xsd:token	One or more printable ASCII characters		Mathematics
TestName	Test Name	N/A	200	Y	The specific name of the assessment the student is eligible to take	Alphanum xsd:token	Dashes allowed		DCAS-EOC-Algebra1-Spring-2012-2013
TestVersion	Test Version	N/A	50	Y	This is part of the unique key to identify a particular assessment	Alphanum xsd:token	Decimals allowed		1.0.33 1.0-RC
TestForm	Test Form	N/A	50	N	The specific name of the form assigned to the student	Alphanum xsd:token	dashes allowed		DCAS-EOC-Algebra1-Spring-2012-2013:DEFAULT-ESN
Delete	Action	N/A	6	N	Delete this record iff value = DELETE	Alpha xsd:token	Yes <blank> or other value	DELETE: Delete record Any other value or <blank>: add/update as necessary	DELETE

Table 23: Eligibility Field Definitions

Student File Format

Format Characteristic	Value
File Format	CSV, TSV, XLS, XLSX
First Row Contains (verbatim)	Header row with the field names
Index (key)	StudentIdentifier+StateAbbreviation

Table 24: Student Format Definition

Field Name	Display Name	Reference	Width	Required	Data Element Description	Type	Acceptable Values	Definitions	Examples	Business Rules
StateAbbreviation	State Abbreviation	CEDS ID 267 K12 -> SEA -> Address USPS	2	Y	2 character state code	enum xsd:token	Two-character US State identifier as defined by CEDS and extended as follows: AA, AE, AP, TS, OT.	AA: Armed Forces Americas AE: Armed Forces Africa, Canada, Europe and Mideast AP: Armed Forces Pacific TS: Test State OT: Other	WA	Must be present in database prior to adding students to it
ResponsibleDistrictIdentifier	Responsible District Identifier	CEDS ID 637 K12 -> K12 Student -> Enrollment	40	Y	The district responsible for specific educational services and/or instruction of the student.	Alphanumeric xsd:token	One or more printable ASCII characters		71715	Must be present in database prior to adding students to it
ResponsibleSchoolIdentifier	Responsible School Identifier	CEDS ID 1069 K12->K12 Student->Enrollment	40	Y	The school responsible for specific education services and/or instruction of the student.	Alphanumeric xsd:token	One or more printable ASCII characters		8716411	Must be present in database and associated with Attending District IRN (ResponsibleDistrictIdentifier)
LastOrSurname	Last Name	CEDS ID 172 K12->K12 Student->Identity->Name	35	Y	Student Last Name	Alphanumeric/special xsd:token	One or more printable ASCII characters		Sojka	FirstName and LastOrSurname are required fields, but TR can be configured to not transmit this data if the State wishes to withhold identity data
FirstName	First Name	CEDS ID 115 K12->K12 Student->Identity->Name	35	Y	Student First Name	Alphanumeric/special xsd:token	One or more printable ASCII characters		Bud	FirstName and LastOrSurname are required fields, but TR can be configured to not transmit this data if the State wishes to withhold identity data

Field Name	Display Name	Reference	Width	Required	Data Element Description	Type	Acceptable Values	Definitions	Examples	Business Rules
MiddleName	Middle Name	CEDS ID 184 K12->K12 Student->Identity->Name	35	N	Student Middle Name	Alphanumeric/special xsd:token	One or more printable ASCII characters		Johan	
Birthdate	Birthdate	CEDS ID 33 K12->K12 Student->Demographic	10	N	The year, month and day on which a person was born, in the format YYYY-MM-DD (zero-padded)	Numeric+dash xsd:string	1900 <= YYYY <= 9999 01 <= MM <= 12 01 <= DD <= 31		2013-08-31	Add leading zero if less than 2 digit month or day
StudentIdentifier	SSID	CEDS ID 1071 K12->K12 Student->Identity->Identification	40	Y	State assigned student Identifier which is unique within that state. Every student should have a unique SSID within their state.	Alphanumeric xsd:token	One or more printable ASCII characters		82811007	
AlternateSSID	Alternate SSID	N/A	50	Y	A State assigned student Identifier which is unique within that state. This identifier is used by states that do not wish to share student personal identifying information outside of state-deployed systems. Components sending data to Consortium-deployed systems would use this alternate identifier rather than the student's SSID.	Alphanumeric xsd:token	One or more printable ASCII characters		32547685 ABC	Do not validate SSIDs differently across different states.
GradeLevelWhenAssessed	Grade Level When Assessed	CEDS ID 126 K12 -> Assessments -> Assessment Registration	2	Y	Student's enrolled grade.	Alphanumeric xsd:token	IT PR PK TK KG 01 02 03 04 05 06 07 08 09 10 11	IT - Infant/toddler PR - Preschool PK - Prekindergarten TK - Transitional Kindergarten KG - Kindergarten 01 - First grade 02 - Second grade 03 - Third grade 04 - Fourth grade 05 - Fifth grade 06 - Sixth grade 07 - Seventh grade 08 - Eighth grade 09 - Ninth grade 10 - Tenth grade	05	Add leading zero if less than 2 digits

Field Name	Display Name	Reference	Width	Required	Data Element Description	Type	Acceptable Values	Definitions	Examples	Business Rules
							12 13 PS UG	11 - Eleventh grade 12 - Twelfth grade 13 - Grade 13 PS - Postsecondary UG - Ungraded		
Sex	Sex	CEDS ID 255 K12->K12 Student->Demographic	6	Y	Student's gender	enum xsd:token	Male Female		Female	
HispanicOrLatinoEthnicity	Hispanic or Latino Ethnicity	CEDS ID 144 K12->K12 Student->Demographic	3	Y	Hispanic Ethnic Flag	enum xsd:token	Yes No		No	One or more race fields (below) must also be marked 'Yes'
AmericanIndianOrAlaskaNative	American Indian or Alaska Native	CEDS ID 16 K12->K12 Student->Demographic	3	Y	American Indian/Alaskan Native Race Flag	enum xsd:token	Yes No		Yes	At least one race field must be marked Yes
Asian	Asian	CEDS ID 20 K12->K12 Student->Demographic	3	Y	Asian Race Flag	enum xsd:token	Yes No		No	At least one race field must be marked Yes
BlackOrAfricanAmerican	Black or African American	CEDS ID 34 K12->K12 Student->Demographic	3	Y	African American Race Flag	enum xsd:token	Yes No		Yes	At least one race field must be marked Yes
White	White	CEDS ID 301 K12->K12 Student->Demographic	3	Y	White Race Flag	enum xsd:token	Yes No		No	At least one race field must be marked Yes
NativeHawaiianOrOtherPacificIslander	Native Hawaiian or Other Pacific Islander	CEDS ID 192 K12->K12 Student->Demographic	3	Y	Native Hawaiian/Other Pacific Islander Race Flag	enum xsd:token	Yes No		Yes	At least one race field must be marked Yes
DemographicRaceTwoOrMoreRaces	Demographic Race Two or More Races	CEDS ID 973 K12 -> K12 Student -> Demographic	3	Y	A person having origins in any of more than one of the racial groups.	enum xsd:token	Yes No		Yes	At least one race field must be marked Yes

Field Name	Display Name	Reference	Width	Required	Data Element Description	Type	Acceptable Values	Definitions	Examples	Business Rules
IDEAIndicator	IDEA Indicator	CEDS ID 151 K12->K12 Student->Disability	3	Y	Student Enrolled in IEP	enum xsd:token	Yes No		No	
LEPStatus	Limited English Proficiency Status	CEDS ID 180 K12 -> K12 Student -> Limited English Proficiency	3	Y	Student identified as LEP	enum xsd:token	Yes No		Yes	
Section504Status	Section 504 Status	CEDS ID 249 K12 -> K12 Student -> Disability	22	Y	Student with 504 plan	enum xsd:token	Yes No Unknown/Cannot Provide		No	
EconomicDisadvantageStatus	Economic Disadvantage Status	CEDS ID 86 K12 -> K12 Student -> Economically Disadvantaged -> EconomicDisadvantageStatus	3	Y	An indication that the student met the State criteria for classification as having an economic disadvantage.	enum xsd:token	Yes No		Yes	This field is not CEDS compliant due to the name change from TitleI/TargetedAssistanceParticipationStatus
LanguageCode	Language Code	CEDS ID 317 K12 -> K12 Student -> Language and CEDS Language Codes	3	N	The code for the specific language or dialect that a person uses to communicate.	enum xsd:token	see http://ceds.ed.gov/languageCodes.aspx		fiu	
EnglishLanguageProficiencyLevel	English Language Proficiency Level	N/A	20	N	An indication of the progress made by a student toward English proficiency	Alphanum xsd:token	One or more printable ASCII characters		PROGRESS	This field is not CEDS compliant due to the name change from TitleII/AccountabilityProgressStatus (CEDS ID 536). Furthermore, the Acceptable Values have changed to non-enum, alphanum entry.
MigrantStatus	Migrant Status	CEDS ID 189 K12 -> K12 Student -> Migrant -> MigrantStatus	3	N	Persons who are, or whose parents or spouses are, migratory agricultural workers, including migratory dairy workers, or migratory fishers, and who, in the preceding 36 months, in order to obtain, or accompany such parents	enum xsd:token	Yes No <blank>		Yes	

Field Name	Display Name	Reference	Width	Required	Data Element Description	Type	Acceptable Values	Definitions	Examples	Business Rules
					or spouses, in order to obtain, temporary or seasonal employment in agricultural or fishing work (A) have moved from one LEA to another; (B) in a state that comprises a single LEA, have moved from one administrative area to another within such LEA; or (C) reside in an LEA of more than 15,000 square miles, and migrate a distance of 20 miles or more to a temporary residence to engage in a fishing activity.					
FirstEntryDateIntoUSSchool	First Entry Date into a US School	CEDS ID 529 K12 -> K12 Student -> Immigrant	10	N	The year, month and day of a person's initial enrollment into a United States school.	Numeric+dash xsd:string	YYYY-MM-DD <blank>		2013-08-31	Add leading zero to MM and DD if less than 2 digits
LimitedEnglishProficiencyEntryDate	Limited English Proficiency Entry Date	CEDS ID 1247 K12 -> K12 Student -> Limited English Proficiency	10	N	The year, month and day a student classified as limited English proficient entered the LEP program.	Numeric+dash xsd:token	YYYY-MM-DD <blank>		2013-08-31	Add leading zero to MM and DD if less than 2 digits
LEPExitDate	Limited English Proficiency Exit Date	CEDS ID 570 K12 -> K12 Student -> Limited English Proficiency	10	N	The year, month and day a student classified as limited English proficient exited the LEP program.	Numeric+dash xsd:token	YYYY-MM-DD <blank>		2013-08-31	Add leading zero to MM and DD if less than 2 digits
TitleIIILanguageInstructionProgramType	Title III Language Instruction Program Type	CEDS ID 447 K12 -> K12 School -> Institution Characteristics	27	N	Title III Language Instruction Program Type	enum xsd:token	DualLanguage, TwoWayImmersion, TransitionalBilingual, DevelopmentalBilingual, HeritageLanguage, ShelteredEnglishInstruction, StructuredEnglishImmersion, SDAIE, ContentBasedESL, PullOutESL, Other	DualLanguage - Dual language TwoWayImmersion - Two-way immersion TransitionalBilingual - Transitional bilingual DevelopmentalBilingual - Developmental bilingual HeritageLanguage - Heritage language ShelteredEnglishInstruction - Sheltered English	HeritageLanguage	

Field Name	Display Name	Reference	Width	Required	Data Element Description	Type	Acceptable Values	Definitions	Examples	Business Rules
								instruction StructuredEnglishImmersion - Structured English immersion SDAIE - Specially designed academic instruction delivered in English (SDAIE) ContentBasedESL - Content-based ESL PullOutESL - Pull-out ESL Other - Other		
PrimaryDisabilityType	Primary Disability Type	CEDS ID 218 K12 -> K12 Student -> Disability	3	N	The major or overriding disability condition that best describes a person's impairment.	enum xsd:token	AUT, DB, DD, EMN, HI, ID, MD, OI, OHI, SLD, SLI, TBI, VI	AUT - Autism DB - Deaf-blindness DD - Developmental delay EMN - Emotional disturbance HI - Hearing impairment ID - Intellectual Disability MD - Multiple disabilities OI - Orthopedic impairment OHI - Other health impairment SLD - Specific learning disability SLI - Speech or language impairment TBI - Traumatic brain injury VI - Visual impairment	EMN	
Delete	Action	N/A	6	N	Delete this record iff value = DELETE	Alpha xsd:token	DELETE <blank> or other value	DELETE: Delete record Any other value or <blank>: add/update as necessary	DELETE	

Table 25: Student Field Definitions