

Prepared for:



by:

Amplify.

Smarter Balanced Reporting
Data Model
Data Warehouse

Approvals

Representing	Date	Author	Status
Consortium		Joe Willhoft	
Consortium	2014.06.09	Brandt Redd	Submitted for review
PMP		Kevin King	
Workgroup		Henry King	

Revision History

Revision Description	Author/Modifier	Date
Initial Release (DRAFT)	Anna Grebneva (Amplify)	2014.06.03
Added new table for IAB	Doris Ip (Amplify)	2014.12.04
Updated table for dim_asmt, fact_asmt_outcome, fact_block_asmt_outcome, fact_asmt_outcome_vw	Takashi Osako (Amplify)	2015.04.30

Table of Contents

[Smarter Balanced Assessment Domain](#)

[dim_inst_hier](#)

[dim_student](#)

[dim_asmt](#)

[fact_asmt_outcome](#)

[fact_block_asmt_outcome](#)

[Student Registration Domain](#)

[student_reg](#)

[Assessment Reporting Domain](#)

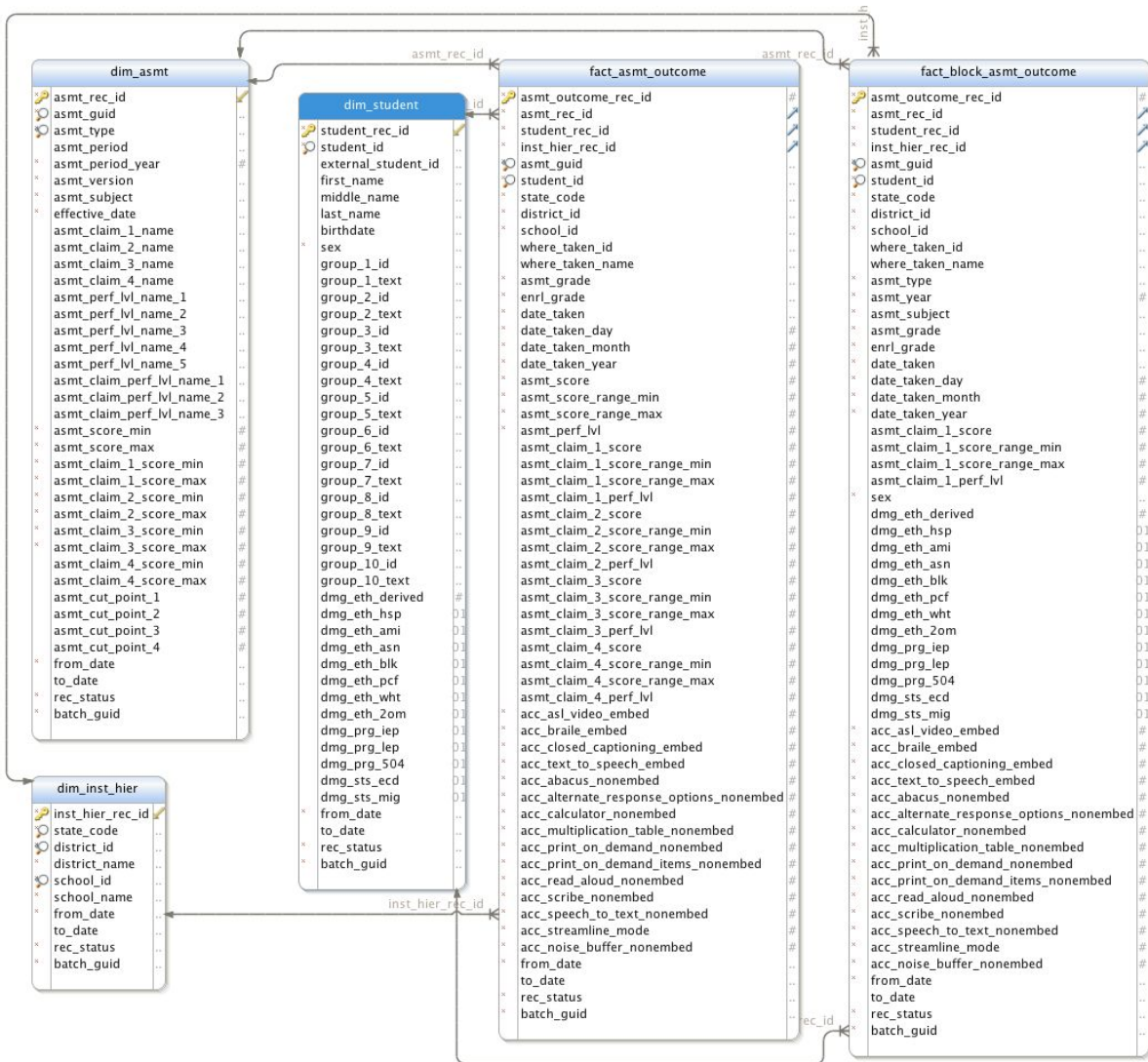
[fact_asmt_outcome_vw](#)

Smarter Balanced Warehouse Data Domains

1. Smarter Balanced Assessment Domain

Assessment domain defines a model used for Smarter Balanced assessments, including Summative, Interim Comprehensive and Interim Assessment Blocks.

Entity	Description
dim_inst_hier	The dimension represents institution hierarchy a given student belongs to. It includes state, district, and school.
dim_student	The dimension represents a student who is registered for and/or has taken an assessment.
dim_asmt	The dimension represents an instrument by which student knowledge and skill is measured.
fact_asmt_outcome	The entity represents scoring for student Summative and Interim Comprehensive results.
fact_block_asmt_outcome	The entity represents scoring for Interim Assessment Blocks results



Generated using DbSchema

1.1. dim_inst_hier

name	dim_inst_hier
------	---------------

primary keys	inst_hier_rec_id
description	Institution hierarchy dimension.
inversion entry	dim_inst_hier_codex (state_code, district_id, school_id)
child foreign key	fact_asmt_outcome Non-Identifying One To Zero or More

column name	data type	width	xml data type	nullabl e	CEDS Reference	description
inst_hier_rec_id	bigserial		xsd:integer	n	None	primary key
state_code	varchar	2	xsd:token	n	https://ceds.ed.gov/CEDSElementDetails.aspx?TermxTopicId=19974 CEDS Element ID 000267	State 2 letter abbreviation, e.g. CA
district_id	varchar	40	xsd:token	n	https://ceds.ed.gov/CEDSElementDetails.aspx?TermxTopicId=20905 CEDS Element ID 000637	Identifier for the district
district_name	varchar	60	xsd:token	n	https://ceds.ed.gov/CEDSElementDetails.aspx?TermxTopicId=19902 CEDS Element ID 000204	Official district display-name
school_id	varchar	40	xsd:token	n	https://ceds.ed.gov/CEDSElementDetails.aspx?TermxTopicId=20774	Identifier for the school

					CEDS Element ID 001069	
school_name	varchar	60	xsd:token	n	https://ceds.ed.gov/CEDSElementDetails.aspx?TermxTopicId=19831 CEDS Element ID 000191	Official school display-name
from_date	varchar	8	xsd:token	n	None	Date the record was added to the warehouse
to_date	varchar	8	xsd:token	y	None	Date the record became inactive
rec_status	varchar	1	xsd:token	n	None	Record Status. C for Created, I for inactive, D for deleted
batch_guid	varchar	36	xsd:token	n	None	internal batch id of the import job that inserted the record

1.2. dim_student

name	dim_student
primary keys	student_rec_id
description	Student dimension.
inversion entry	dim_student_id_idx (student_id)
child foreign key	fact_asmt_outcome_primary Non-Identifying One To Zero or More

column name	data type	width	xml data type	nullable	CEDS Reference	description
student_rec_id	bigserial		xsd:integer	n	None	primary key

student_id	varchar	40	xsd:token	n	https://ceds.ed.gov/CEDSElementDetails.aspx?TermxTopicId=20775 CEDS Element ID 001071	Student identifier
external_student_id	varchar	40	xsd:token	y	https://ceds.ed.gov/CEDSElementDetails.aspx?TermxTopicId=20775 CEDS Element ID 001071	External student identifier
first_name	varchar	35	xsd:token	y	https://ceds.ed.gov/CEDSElementDetails.aspx?TermxTopicId=20753 CEDS Element ID 000115	Student first name
middle_name	varchar	35	xsd:token	y	https://ceds.ed.gov/CEDSElementDetails.aspx?TermxTopicId=20786 CEDS Element ID 000184	Student middle name
last_name	varchar	35	xsd:token	y	https://ceds.ed.gov/CEDSElementDetails.aspx?TermxTopicId=20781 CEDS Element ID 000172	Student last name
birthdate	varchar	8	xsd:token	n	https://ceds.ed.gov/CEDSElementDetails.aspx?TermxTopicId=19995 CEDS Element ID 000033	Student birthdate (YYYYMMDD)
sex	varchar	10	xsd:token	n	https://ceds.ed.gov/CEDSElementDetails.aspx?TermxTopicId=20811 CEDS Element ID 000255	Student sex - male/female/NOT_STATED

group_1_id	varchar	40	xsd:token	y	None	Group #1 identifier
group_1_text	varchar	60	xsd:token	y	None	Group #1 label
group_2_id	varchar	40	xsd:token	y	None	Group #2 identifier
group_2_text	varchar	60	xsd:token	y	None	Group #2 label
group_3_id	varchar	40	xsd:token	y	None	Group #3 identifier
group_3_text	varchar	60	xsd:token	y	None	Group #3 label
group_4_id	varchar	40	xsd:token	y	None	Group #4 identifier
group_4_text	varchar	60	xsd:token	y	None	Group #4 label
group_5_id	varchar	40	xsd:token	y	None	Group #5 identifier
group_5_text	varchar	60	xsd:token	y	None	Group #5 label
group_6_id	varchar	40	xsd:token	y	None	Group #6 identifier
group_6_text	varchar	60	xsd:token	y	None	Group #6 label
group_7_id	varchar	40	xsd:token	y	None	Group #7 identifier
group_7_text	varchar	60	xsd:token	y	None	Group #7 label
group_8_id	varchar	40	xsd:token	y	None	Group #8 identifier
group_8_text	varchar	60	xsd:token	y	None	Group #8 label
group_9_id	varchar	40	xsd:token	y	None	Group #9 identifier
group_9_text	varchar	60	xsd:token	y	None	Group #9 label
group_10_id	varchar	40	xsd:token	y	None	Group #10 identifier
group_10_text	varchar	60	xsd:token	y	None	Group #10 label
dmg_eth_derived	smallint		xsd:short	y	None	Derived ethnicity code 0: None, 1: Black

						2: Asian 3: Hispanic (regardless if two or more) 4: American Indian 5: Pacific Islander 6: White 7: Two or more
dmg_eth_hsp	boolean		xsd:boolean	y	https://ceds.ed.gov/CEDSElementDetails.aspx?TermxTopicId=20765 CEDS Element ID 000144	Hispanic or Latino Ethnicity
dmg_eth_ami	boolean		xsd:boolean	y	https://ceds.ed.gov/CEDSElementDetails.aspx?TermxTopicId=20907 CEDS Element ID 000016	American Indian or Alaska Native Ethnicity
dmg_eth_asn	boolean		xsd:boolean	y	https://ceds.ed.gov/CEDSElementDetails.aspx?TermxTopicId=20908 CEDS Element ID 000020	Asian Ethnicity
dmg_eth_blk	boolean		xsd:boolean	y	https://ceds.ed.gov/CEDSElementDetails.aspx?TermxTopicId=20909 CEDS Element ID 000034	Black or African American Ethnicity
dmg_eth_pcf	boolean		xsd:boolean	y	https://ceds.ed.gov/CEDSElementDetails.aspx?TermxTopicId=20910 CEDS Element ID 000192	Native Hawaiian or Other Pacific Islander Ethnicity
dmg_eth_wht	boolean		xsd:boolean	y	https://ceds.ed.gov/CEDSElementDetails.aspx?TermxTopicId=20911 CEDS Element ID 000301	White Ethnicity

dmg_eth_2om	boolean		xsd:boolean	y	https://ceds.ed.gov/CEDSElementDetails.aspx?TermxTopicId=20425 CEDS Element ID 000973	Two or More Ethnicities
dmg_prg_iep	boolean		xsd:boolean	y	https://ceds.ed.gov/CEDSElementDetails.aspx?TermxTopicId=20771 CEDS Element ID 000151	Individualized education program
dmg_prg lep	boolean		xsd:boolean	y	https://ceds.ed.gov/CEDSElementDetails.aspx?TermxTopicId=20783 CEDS Element ID 000180	Limited English Proficiency Status
dmg_prg_504	boolean		xsd:boolean	y	https://ceds.ed.gov/CEDSElementDetails.aspx?TermxTopicId=20810 CEDS Element ID 000249	Section 504 status
dmg_sts_eed	boolean		xsd:boolean	y	https://ceds.ed.gov/CEDSElementDetails.aspx?TermxTopicId=20741 CEDS Element ID 000086	Economic Disadvantage Status
dmg_sts mig	boolean		xsd:boolean	y	https://ceds.ed.gov/CEDSElementDetails.aspx?TermxTopicId=20789 CEDS Element ID 000189	Migrant Status
from_date	varchar	8	xsd:token	n	None	Date the record was added to the warehouse
to_date	varchar	8	xsd:token	y	None	Date the record became inactive

rec_status	varchar	1	xsd:token	n	None	Record Status. C for Created, I for inactive, D for deleted
batch_guid	varchar	36	xsd:token	n	None	Internal batch id of the import job that inserted the record

1.3. dim_asmt

name	dim_asmt
primary keys	asmt_rec_id
description	Assessment dimension
inversion entry	dim_asmt_id_type_idx (asmt_rec_id, asmt_type)
inversion entry	dim_asmt_guid_idx(asmt_guid)
child foreign key	fact_asmt_outcome_primary Non-Identifying One To Zero or More

column name	data type	width	xml data type	nullable	CEDS Reference	description
asmt_rec_id	bigserial		xsd:integer	n	None	primary key
asmt_guid	varchar	255	xsd:token	n	https://ceds.ed.gov/CEDSElementDetails.aspx?TermxTopicId=21367 CEDS Element ID 000981	Identifier for assessment
asmt_type	varchar	32	xsd:token	n	https://ceds.ed.gov/CEDSElementDetails.aspx?TermxTopicId=21359	Type of assessment - SUMMATIVE or INTERIM COMPREHENSIVE

					CEDS Element ID 000029	
asmt_period	varchar	32	xsd:token	n	https://ceds.ed.gov/CEDSElementDetails.aspx?TermxTopicId=21344 CEDS Element ID 000182	Period of assessment, e.g. Spring or Fall
asmt_period_year	smallint		xsd:short	n	https://ceds.ed.gov/CEDSElementDetails.aspx?TermxTopicId=19847 CEDS Element ID 000243	Year of the assessment period
asmt_version	varchar	30	xsd:token	n	None	Version of the assessment
asmt_subject	varchar	64	xsd:token	n	https://ceds.ed.gov/CEDSElementDetails.aspx?TermxTopicId=21356 CEDS Element ID 000021	Assessment subject - Math or ELA
effective_date	varchar	8	xsd:token	n	None	Effective date of the assessment that applies to all records from the same assessment administration, even if individual tests began or ended on different dates
asmt_claim_1_name	varchar	128	xsd:token	y	https://ceds.ed.gov/CEDSElementDetails.aspx?TermxTopicId=21773 CEDS Element ID 000417	Display name of claim 1
asmt_claim_2_name	varchar	128	xsd:token	y	https://ceds.ed.gov/CEDSElementDetails.aspx?TermxTopicId=21773 CEDS Element ID 000417	Display name of claim 2

asmt_claim_3_name	varchar	128	xsd:token	y	https://ceds.ed.gov/CEDSElementDetails.aspx?TermxTopicId=21773 CEDS Element ID 000417	Display name of claim 3
asmt_claim_4_name	varchar	128	xsd:token	y	https://ceds.ed.gov/CEDSElementDetails.aspx?TermxTopicId=21773 CEDS Element ID 000417	Display name of claim 3
asmt_perf_lvl_name_1	varchar	128	xsd:token	y	https://ceds.ed.gov/CEDSElementDetails.aspx?TermxTopicId=21777 CEDS Element ID 000718	Display name for performance level 1
asmt_perf_lvl_name_2	varchar	128	xsd:token	y	https://ceds.ed.gov/CEDSElementDetails.aspx?TermxTopicId=21777 CEDS Element ID 000718	Display name for performance level 2
asmt_perf_lvl_name_3	varchar	128	xsd:token	y	https://ceds.ed.gov/CEDSElementDetails.aspx?TermxTopicId=21777 CEDS Element ID 000718	Display name for performance level 3
asmt_perf_lvl_name_4	varchar	128	xsd:token	y	https://ceds.ed.gov/CEDSElementDetails.aspx?TermxTopicId=21777 CEDS Element ID 000718	Display name for performance level 4
asmt_perf_lvl_name_5	varchar	128	xsd:token	y	https://ceds.ed.gov/CEDSElementDetails.aspx?TermxTopicId=21777 CEDS Element ID 000718	Display name for performance level 5 (reserved)

asmt_claim_perf_lvl_name_1	varchar	128	xsd:token	y	https://ceds.ed.gov/CEDSElementDetails.aspx?TermxTopicId=21777 CEDS Element ID 000718	Claim performance level 1 display name
asmt_claim_perf_lvl_name_2	varchar	128	xsd:token	y	https://ceds.ed.gov/CEDSElementDetails.aspx?TermxTopicId=21777 CEDS Element ID 000718	Claim performance level 2 display name
asmt_claim_perf_lvl_name_3	varchar	128	xsd:token	y	https://ceds.ed.gov/CEDSElementDetails.aspx?TermxTopicId=21777 CEDS Element ID 000718	Claim performance level 3 display name
asmt_score_min	smallint		xsd:short	n	https://ceds.ed.gov/CEDSElementDetails.aspx?TermxTopicId=21627 CEDS Element ID 000395	Minimum score possible for the assessment
asmt_score_max	smallint		xsd:short	n	https://ceds.ed.gov/CEDSElementDetails.aspx?TermxTopicId=21628 CEDS Element ID 000396	Maximum score possible for the assessment
asmt_claim_1_score_min	smallint		xsd:short	n	https://ceds.ed.gov/CEDSElementDetails.aspx?TermxTopicId=21627 CEDS Element ID 000395	Minimum score possible for claim 1 of the assessment
asmt_claim_1_score_max	smallint		xsd:short	n	https://ceds.ed.gov/CEDSElementDetails.aspx?TermxTopicId=21628 CEDS Element ID 000396	Maximum score possible for claim 1 of the assessment

asmt_claim_2_score_min	smallint		xsd:short	n	https://ceds.ed.gov/CEDSElementDetails.aspx?TermxTopicId=21627 CEDS Element ID 000395	Minimum score possible for claim 2 of the assessment
asmt_claim_2_score_max	smallint		xsd:short	n	https://ceds.ed.gov/CEDSElementDetails.aspx?TermxTopicId=21628 CEDS Element ID 000396	Maximum score possible for claim 2 of the assessment
asmt_claim_3_score_min	smallint		xsd:short	n	https://ceds.ed.gov/CEDSElementDetails.aspx?TermxTopicId=21627 CEDS Element ID 000395	Minimum score possible for claim 3 of the assessment
asmt_claim_3_score_max	smallint		xsd:short	n	https://ceds.ed.gov/CEDSElementDetails.aspx?TermxTopicId=21628 CEDS Element ID 000396	Maximum score possible for claim 3 of the assessment
asmt_claim_4_score_min	smallint		xsd:short	y	https://ceds.ed.gov/CEDSElementDetails.aspx?TermxTopicId=21627 CEDS Element ID 000395	Minimum score possible for claim 4 of the assessment
asmt_claim_4_score_max	smallint		xsd:short	y	https://ceds.ed.gov/CEDSElementDetails.aspx?TermxTopicId=21628 CEDS Element ID 000396	Maximum score possible for claim 4 of the assessment
asmt_cut_point_1	smallint		xsd:short	y	https://ceds.ed.gov/CEDSElementDetails.aspx?TermxTopicId=21774 CEDS Element ID 000418	First cut point of the assessment that identifies the performance level

asmt_cut_point_2	smallint		xsd:short	y	https://ceds.ed.gov/CEDSElementDetails.aspx?TermxTopicId=21774 CEDS Element ID 000418	Second cut point of the assessment that identifies the second performance level
asmt_cut_point_3	smallint		xsd:short	y	https://ceds.ed.gov/CEDSElementDetails.aspx?TermxTopicId=21774 CEDS Element ID 000418	Third cut point of the assessment that identifies the third performance level
asmt_cut_point_4	smallint		xsd:short	y	https://ceds.ed.gov/CEDSElementDetails.aspx?TermxTopicId=21774 CEDS Element ID 000418	Fourth cut point of the assessment that identifies the highest performance level
from_date	varchar	8	xsd:token	n	None	Date the record was added to the warehouse
to_date	varchar	8	xsd:token	y	None	Date the record became inactive
rec_status	varchar	1	xsd:token	n	None	Record Status. C for Created, I for inactive, D for deleted
batch_guid	varchar	36	xsd:token	n	None	Internal batch id of the import job that inserted the record

1.4. fact_asmt_outcome

name	fact_asmt_outcome
primary keys	asmt_outcome_rec_id
description	Fact table containing assessment outcomes
inversion entry	fact_asmt_outcome_student_idx (student_id, asmt_guid)

parent foreign key	dim_asm(asmt_rec_id) Non-Identifying One To Zero or More
parent foreign key	dim_inst_hier(inst_hier_rec_id) Non-Identifying One To Zero or More
parent foreign key	dim_student(student_rec_id) Non-Identifying One To Zero or More
parent foreign key	dim_student_demographics(student_demographics_rec_id) Non-Identifying One To Zero or More

column name	data type	width	xml data type	nullable	CEDS Reference	description
asmt_outcome_rec_id	bigserial		xsd:integer	n	None	Primary key
asmt_rec_id	bigint		xsd:integer	n	None	Unique identifier of the assessment record associated with the assessment outcome
student_rec_id	bigint		xsd:integer	n	None	Unique identifier of the student record associated with the assessment outcome
inst_hier_rec_id	bigint		xsd:integer	n	None	Unique identifier of the inst_hier record associated with the assessment outcome
asmt_guid	varchar	255	xsd:token	n	https://ceds.ed.gov/CEDSElementDetails.aspx?TermTopicId=21367 CEDS Element ID 000981	Identifier for assessment

student_id	varchar	40	xsd:token	n	https://ceds.ed.gov/CEDSElementDetails.aspx?TermTopicId=20775 CEDS Element ID 001071	Identifier for student who took the assessment
state_code	varchar	2	xsd:token	n	https://ceds.ed.gov/CEDSElementDetails.aspx?TermTopicId=19974 CEDS Element ID 000267	State code, e.g., CA
district_id	varchar	40	xsd:token	n	https://ceds.ed.gov/CEDSElementDetails.aspx?TermTopicId=20905 CEDS Element ID 000637	Identifier for student district
school_id	varchar	40	xsd:token	n	https://ceds.ed.gov/CEDSElementDetails.aspx?TermTopicId=20774 CEDS Element ID 001069	Identifier for student school
where_taken_id	varchar	40	xsd:token	y	None	Identifier for the test location
where_taken_name	varchar	60	xsd:token	y	https://ceds.ed.gov/CEDSElementDetails.aspx?TermTopicId=21399 CEDS Element ID 000597	Test location name
asmt_grade	varchar	10	xsd:token	n	https://ceds.ed.gov/CEDSElementDetails.aspx?TermTopicId=20775	Grade for the assessment

					aspx?TermTopicId=21362 CEDS Element ID 000177	
enrl_grade	varchar	10	xsd:token	n	https://ceds.ed.gov/CEDSElementDetails.aspx?TermTopicId=20749 CEDS Element ID 000100	Grade of the student
date_taken	varchar	8	xsd:token	n	https://ceds.ed.gov/CEDSElementDetails.aspx?TermTopicId=21673 CEDS Element ID 000964	Date the assessment was taken
date_taken_day	smallint		xsd:short	n	None	Day portion of the assessment date
date_taken_month	smallint		xsd:short	n	None	Month portion of the assessment date
date_taken_year	smallint		xsd:short	n	None	Year portion of the assessment date
asmt_score	smallint		xsd:short	n	https://ceds.ed.gov/CEDSElementDetails.aspx?TermTopicId=21637 CEDS Element ID 000245	Overall score for the assessment outcome
asmt_score_range_min	smallint		xsd:short	n	https://ceds.ed.gov/CEDSElementDetails.aspx?TermTopicId=21627 CEDS Element ID 000395	Left bound of the error band

asmt_score_range_max	smallint		xsd:short	n	https://ceds.ed.gov/CEDSElementDetails.aspx?TermTopicId=21628 CEDS Element ID 000396	Right bound of the error band
asmt_perf_lvl	smallint		xsd:short	n	https://ceds.ed.gov/CEDSElementDetails.aspx?TermTopicId=20253 CEDS Element ID 000717	Performance level of the assessment outcome
asmt_claim_1_score	smallint		xsd:short	y	https://ceds.ed.gov/CEDSElementDetails.aspx?TermTopicId=21637 CEDS Element ID 000245	Score for the assessment claim 1
asmt_claim_1_score_range_min	smallint		xsd:short	y	https://ceds.ed.gov/CEDSElementDetails.aspx?TermTopicId=21627 CEDS Element ID 000395	Left bound of the error band for claim 1 score
asmt_claim_1_score_range_max	smallint		xsd:short	y	https://ceds.ed.gov/CEDSElementDetails.aspx?TermTopicId=21628 CEDS Element ID 000396	Right bound of the error band for claim 1 score
asmt_claim_1_perf_lvl	smallint		xsd:short	y	https://ceds.ed.gov/CEDSElementDetails.aspx?TermTopicId=21623	Performance level for claim 1

					CEDS Element ID 000367	
asmt_claim_2_score	smallint		xsd:short	y	https://ceds.ed.gov/CEDSElementDetails.aspx?TermTopicId=21637 CEDS Element ID 000245	Score for the assessment claim 2
asmt_claim_2_score_range_min	smallint		xsd:short	y	https://ceds.ed.gov/CEDSElementDetails.aspx?TermTopicId=21627 CEDS Element ID 000395	Left bound of the error band for claim 2 score
asmt_claim_2_score_range_max	smallint		xsd:short	y	https://ceds.ed.gov/CEDSElementDetails.aspx?TermTopicId=21628 CEDS Element ID 000396	Right bound of the error band for claim 2 score
asmt_claim_2_perf_lvl	smallint		xsd:short	y	https://ceds.ed.gov/CEDSElementDetails.aspx?TermTopicId=21623 CEDS Element ID 000367	Performance level for claim 2
asmt_claim_3_score	smallint		xsd:short	y	https://ceds.ed.gov/CEDSElementDetails.aspx?TermTopicId=21637 CEDS Element ID 000245	Score for the assessment claim 3

asmt_claim_3_score_range_min	smallint		xsd:short	y	https://ceds.ed.gov/CEDSElementDetails.aspx?TermTopicId=21627 CEDS Element ID 000395	Left bound of the error band for claim 3 score
asmt_claim_3_score_range_max	smallint		xsd:short	y	https://ceds.ed.gov/CEDSElementDetails.aspx?TermTopicId=21628 CEDS Element ID 000396	Right bound of the error band for claim 3 score
asmt_claim_3_perf_lvl	smallint		xsd:short	y	https://ceds.ed.gov/CEDSElementDetails.aspx?TermTopicId=21623 CEDS Element ID 000367	Performance level for claim 3
asmt_claim_4_score	smallint		xsd:short	y	https://ceds.ed.gov/CEDSElementDetails.aspx?TermTopicId=21637 CEDS Element ID 000245	Score for the assessment claim 4
asmt_claim_4_score_range_min	smallint		xsd:short	y	https://ceds.ed.gov/CEDSElementDetails.aspx?TermTopicId=21627 CEDS Element ID 000395	Left bound of the error band for claim 4 score
asmt_claim_4_score_range_max	smallint		xsd:short	y	https://ceds.ed.gov/CEDSElementDetails.aspx?TermTopicId=21628	Right bound of the error band for claim 4 score

					CEDS Element ID 000396	
asmt_claim_4_perf_lvl	smallint		xsd:short	y	https://ceds.ed.gov/CEDSElementDetails.aspx?TermTopicId=21623 CEDS Element ID 000367	Performance level for claim 4
acc_asl_video_embed	smallint		xsd:short	n	https://ceds.ed.gov/CEDSElementDetails.aspx?TermTopicId=21731 CEDS Element ID 000385 Code 73070	Enumerated status for American Sign Language Video Accommodation
acc_braille_embed	smallint		xsd:short	n	https://ceds.ed.gov/CEDSElementDetails.aspx?TermTopicId=21731 CEDS Element ID 000385 Code 00463, 03522	Enumerated status for embedded Braille Accommodation
acc_closed_captioning_embed	smallint		xsd:short	n	https://ceds.ed.gov/CEDSElementDetails.aspx?TermTopicId=21731 CEDS Element ID 000385	Enumerated status for embedded Closed Captioning Accommodation
acc_text_to_speech_embed	smallint		xsd:short	n	https://ceds.ed.gov/CEDSElementDetails.aspx?TermTopicId=21731	Enumerated status for embedded Text-to-Speech Accommodation

					CEDS Element ID 000385	
acc_abacus_nonembed	smallint		xsd:short	n	https://ceds.ed.gov/CEDSElementDetails.aspx?TermxTopicId=21731 CEDS Element ID 000385 Code 03528	Enumerated status for non-embedded Abacus Accommodation
acc_alterate_response_options_nonembed	smallint		xsd:short	n	https://ceds.ed.gov/CEDSElementDetails.aspx?TermxTopicId=21731 CEDS Element ID 000385	Enumerated status for non-embedded Alternative Response Options Accommodation
acc_calculator_nonembed	smallint		xsd:short	n	https://ceds.ed.gov/CEDSElementDetails.aspx?TermxTopicId=21731 CEDS Element ID 000385 Code 03524	Enumerated status for non-embedded Calculator Accommodation
acc_multiplication_table_nonembed	smallint		xsd:short	n	https://ceds.ed.gov/CEDSElementDetails.aspx?TermxTopicId=21731 CEDS Element ID 000385 Code 03517	Enumerated status for non-embedded Multiplication Table Accommodation
acc_print_on_demand_nonembed	smallint		xsd:short	n	https://ceds.ed.gov/CEDSElementDetails.aspx?TermxTopicId=21731	Enumerated status for non-embedded Print-on-Demand Accommodation

					CEDS Element ID 000385	
acc_print_on_demand_items_nonembed	smallint		xsd:short	n	https://ceds.ed.gov/CEDSElementDetails.aspx?TermTopicId=21731 CEDS Element ID 000385	Enumerated status for non-embedded Print-On-Demand for items Accommodation
acc_read_aloud_nonembed	smallint		xsd:short	n	https://ceds.ed.gov/CEDSElementDetails.aspx?TermTopicId=21731 CEDS Element ID 000385 Code 03559, 03564	Enumerated status for non-embedded Read Aloud Accommodation
acc_scribe_nonembed	smallint		xsd:short	n	https://ceds.ed.gov/CEDSElementDetails.aspx?TermTopicId=21731 CEDS Element ID 000385	Enumerated status for non-embedded Scribe Accommodation
acc_speech_to_text_nonembed	smallint		xsd:short	n	https://ceds.ed.gov/CEDSElementDetails.aspx?TermTopicId=21731 CEDS Element ID 000385	Enumerated status for non-embedded Speech-to-Text Accommodation
acc_streamline_mode	smallint		xsd:short	n	https://ceds.ed.gov/CEDSElementDetails.aspx?TermTopicId=21731	Enumerated status for Streamlined Mode Accommodation

					CEDS Element ID 000385	
acc_noise_buffer_none_mbed	smallint		xsd:short	n	https://ceds.ed.gov/CEDSElementDetails.aspx?TermTopicId=21731	Enumerated status for Non-embedded noise buffers
					CEDS Element ID 000385	
from_date	varchar	8	xsd:token	n	None	Date the record was added to the warehouse
to_date	varchar	8	xsd:token	y	None	Date the record became inactive
rec_status	varchar	1	xsd:token	n	None	Record Status. C for Created, I for inactive, D for deleted
batch_guid	varchar	36	xsd:token	n	None	Internal batch id of the import job that inserted the record
asmt_status	varchar	2	xsd:token	n	None	Assessment Status

1.5. fact_block_asmt_outcome

name	fact_block_asmt_outcome
primary keys	asmt_outcome_rec_id
description	Fact table containing assessment outcomes for Interim Assessment Blocks
inversion entry	fact_block_asmt_outcome_student_idx (student_id, asmt_guid)
inversion entry	fact_block_asmt_outcome_report_idx (state_code, school_id, district_id, asmt_year, rec_status, asmt_type, asmt_grade, asmt_subject)

parent foreign key	dim_asmt(asmt_rec_id) Non-Identifying One To Zero or More
parent foreign key	dim_inst_hier(inst_hier_rec_id) Non-Identifying One To Zero or More
parent foreign key	dim_student(student_rec_id) Non-Identifying One To Zero or More

column name	data type	width	xml data type	nullable	CEDS Reference	description
asmt_outcome_rec_id	bigserial		xsd:integer	n	None	Primary key
asmt_rec_id	bigint		xsd:integer	n	None	Unique identifier of the assessment record associated with the assessment outcome
student_rec_id	bigint		xsd:integer	n	None	Unique identifier of the student record associated with the assessment outcome
inst_hier_rec_id	bigint		xsd:integer	n	None	Unique identifier of the inst_hier record associated with the assessment outcome
asmt_guid	varchar	255	xsd:token	n	https://ceds.ed.gov/CEDSElementDetails.aspx?TermxTopicId=21367 CEDS Element ID 000981	Identifier for assessment
student_id	varchar	40	xsd:token	n	https://ceds.ed.gov/CEDSElementDetails.aspx?Term	Identifier for student who took the assessment

					xTopicId=20775 CEDS Element ID 001071	
state_code	varchar	2	xsd:token	n	https://ceds.ed.gov/CEDS-ElementDetails.aspx?TermID=19974 CEDS Element ID 000267	State code, e.g., CA
district_id	varchar	40	xsd:token	n	https://ceds.ed.gov/CEDS-ElementDetails.aspx?TermID=20905 CEDS Element ID 000637	Identifier for student district
school_id	varchar	40	xsd:token	n	https://ceds.ed.gov/CEDS-ElementDetails.aspx?TermID=20774 CEDS Element ID 001069	Identifier for student school
where_taken_id	varchar	40	xsd:token	y	None	Identifier for the test location
where_taken_name	varchar	60	xsd:token	y	https://ceds.ed.gov/CEDS-ElementDetails.aspx?TermID=21399 CEDS Element ID 000597	Test location name
asmt_type	varchar	32	xsd:token	n	https://ceds.ed.gov/CEDS-ElementDetails.aspx?TermID=20774	Type for the assessment

					ElementDetails.aspx?TermxTopicId=21359 CEDS Element ID 000029	
asmt_year	smallint		xsd:short	n	https://ceds.ed.gov/CEDS-ElementDetails.aspx?TermxTopicId=19847 Ceds Element ID 000243	Year for the assessment
asmt_subject	varchar	64	xsd:token	n	https://ceds.ed.gov/CEDS-ElementDetails.aspx?TermxTopicId=21356 CEDS Element ID 000021	Subject for the assessment
asmt_grade	varchar	10	xsd:token	n	https://ceds.ed.gov/CEDS-ElementDetails.aspx?TermxTopicId=21362 CEDS Element ID 000177	Grade for the assessment
enrl_grade	varchar	10	xsd:token	n	https://ceds.ed.gov/CEDS-ElementDetails.aspx?TermxTopicId=20749 CEDS Element ID 000100	Grade of the student
date_taken	varchar	8	xsd:token	n	https://ceds.ed.gov/CEDS-ElementDetails.aspx?TermxTopicId=21359	Date the assessment was taken

					Is.aspx?TermId=21673 CEDS Element ID 000964	
date_taken_day	smallint		xsd:short	n	None	Day portion of the assessment date
date_taken_month	smallint		xsd:short	n	None	Month portion of the assessment date
date_taken_year	smallint		xsd:short	n	None	Year portion of the assessment date
asmt_claim_1_score	smallint		xsd:short	y	https://ceds.ed.gov/CEDSElementDetails.aspx?TermId=21637 CEDS Element ID 000245	Score for assessment
asmt_claim_1_score_range_min	smallint		xsd:short	y	https://ceds.ed.gov/CEDSElementDetails.aspx?TermId=21627 CEDS Element ID 000395	Left bound of the error band for the assessment score
asmt_claim_1_score_range_max	smallint		xsd:short	y	https://ceds.ed.gov/CEDSElementDetails.aspx?TermId=21628 CEDS Element ID 000396	Right bound of the error band for assessment score
asmt_claim_1_perf_lvl	smallint		xsd:short	y	https://ceds.ed.gov/CEDSElementDetails.aspx?TermId=21623	Performance level for assessment

					CEDS Element ID 000367	
sex	varchar	10	xsd:token	n	https://ceds.ed.gov/CEDS-ElementDetails.aspx?TermxTopicId=20811 CEDS Element ID 000255	Student sex -male/female/NOT_ STATED
dmg_eth_derived	smallint		xsd:short	y	None	Derived ethnicity code 0: None, 1: Black 2: Asian 3: Hispanic (regardless if two or more) 4: American Indian 5: Pacific Islander 6: White 7: Two or more
dmg_eth_hsp	boolean		xsd:boolean	y	https://ceds.ed.gov/CEDS-ElementDetails.aspx?TermxTopicId=20765 CEDS Element ID 000144	Hispanic or Latino Ethnicity
dmg_eth_ami	boolean		xsd:boolean	y	https://ceds.ed.gov/CEDS-ElementDetails.aspx?TermxTopicId=20907 CEDS Element ID 000016	American Indian or Alaska Native Ethnicity
dmg_eth_asn	boolean		xsd:boolean	y	https://ceds.ed.gov/CEDS-ElementDetails.aspx?TermxTopicId=20907	Asian Ethnicity

					xTopicId=20908 CEDS Element ID 000020	
dmg_eth_blk	boolean		xsd:boolean	y	https://ceds.ed.gov/CEDSElementDetails.aspx?TermxTopicId=20909 CEDS Element ID 000034	Black or African American Ethnicity
dmg_eth_pcf	boolean		xsd:boolean	y	https://ceds.ed.gov/CEDSElementDetails.aspx?TermxTopicId=20910 CEDS Element ID 000192	Native Hawaiian or Other Pacific Islander Ethnicity
dmg_eth_wht	boolean		xsd:boolean	y	https://ceds.ed.gov/CEDSElementDetails.aspx?TermxTopicId=20911 CEDS Element ID 000301	White Ethnicity
dmg_prg_iep	boolean		xsd:boolean	y	https://ceds.ed.gov/CEDSElementDetails.aspx?TermxTopicId=20771 CEDS Element ID 000151	Individualized Education Program
dmg_prg_lep	boolean		xsd:boolean	y	https://ceds.ed.gov/CEDSElementDetails.aspx?Term	Limited English Proficiency Status

					xTopicId=20783 CEDS Element ID 000180	
dmg_prg_504	boolean		xsd:boolean	y	https://ceds.ed.gov/CEDSElementDetails.aspx?TermxTopicId=20810 CEDS Element ID 000249	Section 504 status
dmg_sts_ecd	boolean		xsd:boolean	y	https://ceds.ed.gov/CEDSElementDetails.aspx?TermxTopicId=20741 CEDS Element ID 000086	Economic Disadvantage Status
dmg_sts_mig	boolean		xsd:boolean	y	https://ceds.ed.gov/CEDSElementDetails.aspx?TermxTopicId=20789 CEDS Element ID 000189	Migrant Status
acc_asl_video_embed	smallint		xsd:short	n	https://ceds.ed.gov/CEDSElementDetails.aspx?TermxTopicId=21731 CEDS Element ID 000385 Code 73070	The specific accommodation necessary for the administration of the assessment using sign language video.
acc_braile_embed	smallint		xsd:short	n	https://ceds.ed.gov/CEDSElementDetails.aspx?TermxTopicId=21731	The specific accommodation necessary for the

					Is.aspx?TermId=21731 CEDS Element ID 000385 Code 00463, 03522	administration of the assessment using braille
acc_closed_captioning_embed	smallint		xsd:short	n	https://ceds.ed.gov/CEDS-ElementDetails.aspx?TermId=21731 CEDS Element ID 000385	The specific accommodation necessary for the administration of the assessment using closed captioning.
acc_text_to_speech_embed	smallint		xsd:short	n	https://ceds.ed.gov/CEDS-ElementDetails.aspx?TermId=21731 CEDS Element ID 000385	The specific accommodation necessary for the administration of the assessment using text to speech.
acc_abacus_nonembed	smallint		xsd:short	n	https://ceds.ed.gov/CEDS-ElementDetails.aspx?TermId=21731 CEDS Element ID 000385 Code 03528	The specific accommodation necessary for the administration of the assessment using an abacus.
acc_alternate_response_options_nonembed	smallint		xsd:short	n	https://ceds.ed.gov/CEDS-ElementDetails.aspx?TermId=21731 CEDS Element ID 000385	The specific accommodation necessary for the administration of the assessment using an alternate response options.

acc_calculator_nonembed	smallint		xsd:short	n	https://ceds.ed.gov/CEDS/ElementDetails.aspx?TermxTopicId=21731 CEDS Element ID 000385 Code 03524	The specific accommodation necessary for the administration of the assessment using a calculator.
acc_multiplication_table_nonembed	smallint		xsd:short	n	https://ceds.ed.gov/CEDS/ElementDetails.aspx?TermxTopicId=21731 CEDS Element ID 000385 Code 03517	The specific accommodation necessary for the administration of the assessment using multiplication table.
acc_print_on_demand_nonembed	smallint		xsd:short	n	https://ceds.ed.gov/CEDS/ElementDetails.aspx?TermxTopicId=21731 CEDS Element ID 000385	The specific accommodation necessary for the administration of the assessment by printing on demand.
acc_print_on_demand_items_nonembed	smallint		xsd:short	n	https://ceds.ed.gov/CEDS/ElementDetails.aspx?TermxTopicId=21731 CEDS Element ID 000385	The specific accommodation necessary for the administration of the assessment by printing on demand for items.
acc_read_aloud_nonembed	smallint		xsd:short	n	https://ceds.ed.gov/CEDS/ElementDetails.aspx?TermxTopicId=21731	Enumerated status for non-embedded Read Aloud Accommodation

					<p>CEDS Element ID 000385</p> <p>Code 03559, 03564</p>	
acc_scribe_nonembed	smallint		xsd:short	n	<p>https://ceds.ed.gov/CEDSElementDetails.aspx?TermxTopicId=21731</p> <p>CEDS Element ID 000385</p>	Enumerated status for non-embedded Scribe Accommodation
acc_speech_to_text_nonembed	smallint		xsd:short	n	<p>https://ceds.ed.gov/CEDSElementDetails.aspx?TermxTopicId=21731</p> <p>CEDS Element ID 000385</p>	Enumerated status for non-embedded Speech-to-Text Accommodation
acc_streamline_mode	smallint		xsd:short	n	<p>https://ceds.ed.gov/CEDSElementDetails.aspx?TermxTopicId=21731</p> <p>CEDS Element ID 000385</p>	Enumerated status for Streamlined Mode Accommodation
acc_noise_buffer_nonembed	smallint		xsd:short	n	<p>https://ceds.ed.gov/CEDSElementDetails.aspx?TermxTopicId=21731</p> <p>CEDS Element ID 000385</p>	Enumerated status for Non-embedded noise buffers
from_date	varchar	8	xsd:token	n	None	Date the record was added to the warehouse

to_date	varchar	8	xsd:token	y	None	Date the record became inactive
rec_status	varchar	1	xsd:token	n	None	Record Status. C for Created, I for inactive, D for deleted
batch_guid	varchar	36	xsd:token	n	None	Internal batch id of the import job that inserted the record
amst_status	varchar	2	xsd:token	n	None	Assessment Status

2. Student Registration Domain

Entity	Description
student_reg	The entity represents student registration details for a specific academic year.

Student Registration

student_reg			
student_reg_rec_id	bigserial	#	
state_code	varchar(2)	..	
district_guid	varchar(40)	..	
district_name	varchar(60)	..	
school_guid	varchar(40)	..	
school_name	varchar(60)	..	
student_guid	varchar(40)	..	
external_student_ssid	varchar(40)	..	
first_name	varchar(35)	..	
middle_name	varchar(35)	..	
last_name	varchar(35)	..	
birthdate	varchar(10)	..	
sex	varchar(10)	..	
enr_grade	varchar(10)	..	
dmg_eth_hsp	bool	01	
dmg_eth_ami	bool	01	
dmg_eth_asn	bool	01	
dmg_eth_blk	bool	01	
dmg_eth_pcf	bool	01	
dmg_eth_wht	bool	01	
dmg_multi_race	bool	01	
dmg_prg_iep	bool	01	
dmg_prg_lep	bool	01	
dmg_prg_504	bool	01	
dmg_sts_ecd	bool	01	
dmg_sts_mig	bool	01	
confirm_code	varchar(50)	..	
language_code	varchar(3)	..	
eng_prof_lvl	varchar(20)	..	
us_school_entry_date	varchar(10)	..	
lep_entry_date	varchar(10)	..	
lep_exit_date	varchar(10)	..	
t3_program_type	varchar(27)	..	
prim_disability_type	varchar(3)	..	
student_reg_guid	varchar(50)	..	
academic_year	smallint	#	
extract_date	varchar(10)	..	
reg_system_id	varchar(40)	..	
batch_guid	varchar(36)	..	

2.1. student_reg

name	student_reg
primary keys	student_reg_rec_id
description	Student registration information.
inversion entry	student_reg_id_idx (student_id)
inversion entry	student_reg_year_system_idx (academic_year, reg_system_id)

column name	data type	width	xml data type	nullabl e	CEDS Reference	description
student_reg_rec_id	bigserial		xsd:integer	n	None	primary key
state_code	varchar	2	xsd:token	n	https://ceds.ed.gov/CEDSElementDetails.aspx?TermxTopicId=19974 CEDS Element ID 000267	State 2 letter abbreviation, e.g., CA
state_name	varchar	50	xsd:token	n	None	Full state name, e.g., California
district_id	varchar	40	xsd:token	n	https://ceds.ed.gov/CEDSElementDetails.aspx?TermxTopicId=20905 CEDS Element ID 000637	Identifier for the district
district_name	varchar	60	xsd:token	n	https://ceds.ed.gov/CEDSElementDetails.aspx?TermxTopicId=19902 CEDS Element ID 000204	Official district name

school_id	varchar	40	xsd:token	n	https://ceds.ed.gov/CEDSElementDetails.aspx?TermxTopicId=20774 CEDS Element ID 001069	Identifier for the school
school_name	varchar	60	xsd:token	n	https://ceds.ed.gov/CEDSElementDetails.aspx?TermxTopicId=19831 CEDS Element ID 000191	Official school name
student_id	varchar	40	xsd:token	n	https://ceds.ed.gov/CEDSElementDetails.aspx?TermxTopicId=20775 CEDS Element ID 001071	Student identifier
external_student_ssid	varchar	40	xsd:token	n	https://ceds.ed.gov/CEDSElementDetails.aspx?TermxTopicId=20775 CEDS Element ID 001071	External student identifier
first_name	varchar	35	xsd:token	y	https://ceds.ed.gov/CEDSElementDetails.aspx?TermxTopicId=20753 CEDS Element ID 000115	Student first name
middle_name	varchar	35	xsd:token	y	https://ceds.ed.gov/CEDSElementDetails.aspx?TermxTopicId=20786 CEDS Element ID 000184	Student middle name
last_name	varchar	35	xsd:token	y	https://ceds.ed.gov/CEDSElement	Student last name

					ntDetails.aspx?TermxTopicId=20781 CEDS Element ID 000172	
birthdate	varchar	10	xsd:token	y	https://ceds.ed.gov/CEDSElementDetails.aspx?TermxTopicId=19995 CEDS Element ID 000033	Student birthdate (YYYY-MM-DD)
sex	varchar	10	xsd:token	n	https://ceds.ed.gov/CEDSElementDetails.aspx?TermxTopicId=20811 CEDS Element ID 000255	Student sex - male/female/NOT_S TATED
enrl_grade	varchar	10	xsd:token	n	https://ceds.ed.gov/CEDSElementDetails.aspx?TermxTopicId=20749 CEDS Element ID 000100	Grade student is registered in
dmg_eth_hsp	boolean		xsd:boolean	y	https://ceds.ed.gov/CEDSElementDetails.aspx?TermxTopicId=20765 CEDS Element ID 000144	Hispanic or Latino Ethnicity
dmg_eth_ami	boolean		xsd:boolean	y	https://ceds.ed.gov/CEDSElementDetails.aspx?TermxTopicId=20907 CEDS Element ID 000016	American Indian or Alaska Native Ethnicity
dmg_eth_asn	boolean		xsd:boolean	y	https://ceds.ed.gov/CEDSElementDetails.aspx?TermxTopicId=20907	Asian Ethnicity

					ermxTopicId=20908 CEDS Element ID 000020	
dmg_eth_blk	boolean		xsd:boolean	y	https://ceds.ed.gov/CEDSElementDetails.aspx?TermxTopicId=20909 CEDS Element ID 000034	Black or African American Ethnicity
dmg_eth_pcf	boolean		xsd:boolean	y	https://ceds.ed.gov/CEDSElementDetails.aspx?TermxTopicId=20910 CEDS Element ID 000192	Native Hawaiian or Other Pacific Islander Ethnicity
dmg_eth_wht	boolean		xsd:boolean	y	https://ceds.ed.gov/CEDSElementDetails.aspx?TermxTopicId=20911 CEDS Element ID 000301	White Ethnicity
dmg_multi_race	boolean		xsd:boolean	y	https://ceds.ed.gov/CEDSElementDetails.aspx?TermxTopicId=20425 CEDS Element ID 000973	Two or More Races
dmg_prg_iep	boolean		xsd:boolean	y	https://ceds.ed.gov/CEDSElementDetails.aspx?TermxTopicId=20771 CEDS Element ID 000151	Individualized Education Plan
dmg_prg_lep	boolean		xsd:boolean	y	https://ceds.ed.gov/CEDSElementDetails.aspx?TermxTopicId=20771	Limited English Proficiency Status

					ermxTopicId=20783 CEDS Element ID 000180	
dmg_prg_504	boolean		xsd:boolean	y	https://ceds.ed.gov/CEDSElementDetails.aspx?TermxTopicId=20810 CEDS Element ID 000249	Section 504 status
dmg_sts_ecd	boolean		xsd:boolean	y	https://ceds.ed.gov/CEDSElementDetails.aspx?TermxTopicId=20741 CEDS Element ID 000086	Economically Disadvantaged
dmg_sts_mig	boolean		xsd:boolean	y	https://ceds.ed.gov/CEDSElementDetails.aspx?TermxTopicId=20789 CEDS Element ID 000189	Migrant Status
confirm_code	varchar	50	xsd:token	n	None	Confirmation code from Test Registration
language_code	varchar	3	xsd:token	y	https://ceds.ed.gov/CEDSElementDetails.aspx?TermxTopicId=20829 CEDS Element ID 000317	Primary Language
eng_prof_lvl	varchar	20	xsd:token	y	No CEDS; examples include: http://www.k12.wa.us/migrantbilingual/eld.aspx http://ell.dpi.wi.gov/files/ell/pdf/ell-levels.pdf	English Proficiency Level

us_school_entry_date	varchar	10	xsd:token	y	https://ceds.ed.gov/CEDSElementDetails.aspx?TermxTopicId=20860 CEDS Element ID 000529	Date of first US School entry
lep_entry_date	varchar	10	xsd:token	y	https://ceds.ed.gov/CEDSElementDetails.aspx?TermxTopicId=20717 CEDS Element ID 001247	Limited English Proficient start, if applicable
lep_exit_date	varchar	10	xsd:token	y	https://ceds.ed.gov/CEDSElementDetails.aspx?TermxTopicId=20880 CEDS Element ID 000570	Limited English Proficient exit, if applicable
t3_program_type	varchar	27	xsd:token	y	https://ceds.ed.gov/CEDSElementDetails.aspx?TermxTopicId=19922 CEDS Element ID 00044	The type of Title III language instructional programs.
prim_disability_type	varchar	3	xsd:token	y	https://ceds.ed.gov/CEDSElementDetails.aspx?TermxTopicId=20800 CEDS Element ID 000218	The major or overriding disability condition that best describes a person's impairment.
academic_year	smallint		xsd:Short	n	None	Academic year of registration
extract_date	varchar	10	xsd:token	n	None	Date that data was extracted
reg_system_id	varchar	40	xsd:token	n	None	System that provided registration record

batch_guid	varchar	36	xsd:token	n	None	internal batch id of the import job that inserted the record
------------	---------	----	-----------	---	------	--

3. Assessment Reporting Domain

Entity	Description
fact_asmt_outcome_vw	The entity represents a denormalized snapshot of student assessment outcome designed to improve reporting performance.

Assessment Reporting

fact_asmt_outcome_vw	
asmt_outcome_rec_id	bigserial #
asmt_rec_id	bigint #
student_rec_id	bigint #
inst_hier_rec_id	bigint #
asmt_guid	varchar(36) ..
student_guid	varchar(40) ..
state_code	varchar(2) ..
district_guid	varchar(40) ..
school_guid	varchar(50) ..
where_taken_id	varchar(40) ..
where_taken_name	varchar(60) ..
asmt_type	varchar(32) ..
asmt_year	smallint #
asmt_subject	varchar(64) ..
asmt_grade	varchar(10) ..
enrl_grade	varchar(10) ..
group_1_id	varchar(40) ..
group_1_text	varchar(60) ..
group_2_id	varchar(40) ..
group_2_text	varchar(60) ..
date_taken	varchar(8) ..
date_taken_day	smallint #
date_taken_month	smallint #
date_taken_year	smallint #
asmt_score	smallint #
asmt_score_range_min	smallint #
asmt_score_range_max	smallint #
asmt_perf_lvl	smallint #
asmt_claim_1_score	smallint #
asmt_claim_1_score_range_min	smallint #
asmt_claim_1_score_range_max	smallint #
asmt_claim_1_perf_lvl	smallint #
asmt_claim_2_score	smallint #
asmt_claim_2_score_range_min	smallint #
asmt_claim_2_score_range_max	smallint #
asmt_claim_2_perf_lvl	smallint #
asmt_claim_3_score	smallint #
asmt_claim_3_score_range_min	smallint #
asmt_claim_3_score_range_max	smallint #
asmt_claim_3_perf_lvl	smallint #
asmt_claim_4_score	smallint #
asmt_claim_4_score_range_min	smallint #
asmt_claim_4_score_range_max	smallint #
asmt_claim_4_perf_lvl	smallint #
sex	varchar(10) ..
dmg_eth_derived	smallint #
dmg_eth_hsp	bool01
dmg_eth_ami	bool01
dmg_eth_asn	bool01
dmg_eth_blk	bool01
dmg_eth_pcf	bool01
dmg_eth_wht	bool01
dmg_eth_2om	bool01
dmg_prg_iep	bool01
dmg_prg_lep	bool01
dmg_prg_504	bool01
dmg_sts_ecd	bool01
dmg_sts_mig	bool01
acc_asl_video_embed	smallint #
acc_asl_human_nonembed	smallint #
acc_braille_embed	smallint #
acc_closed_captioning_embed	smallint #
acc_text_to_speech_embed	smallint #
acc_abacus_nonembed	smallint #
acc_alternate_response_options_nonembed	smallint #
acc_calculator_nonembed	smallint #
acc_multiplication_table_nonembed	smallint #
acc_print_on_demand_nonembed	smallint #
acc_read_aloud_nonembed	smallint #
acc_scribe_nonembed	smallint #
acc_speech_to_text_nonembed	smallint #
acc_streamline_mode	smallint #
from_date	varchar(8) ..
to_date	varchar(8) ..
rec_status	varchar(1) ..
batch_guid	varchar(36) ..

3.1. fact_asmt_outcome_vw

name	fact_asmt_outcome_vw
primary keys	asmt_outcome_vw_rec_id
description	Fact table containing assessment outcomes
inversion entry	fact_asmt_outcome_vw_student_idx (student_id, asmt_guid)
inversion entry	fact_asmt_outcome_vw_cpop_stateview_idx (state_code, asmt_type, rec_status, asmt_year, inst_hier_rec_id, asmt_subject, asmt_perf_lvl)
inversion entry	fact_asmt_outcome_vw_grade_idx (asmt_grade)
inversion entry	fact_asmt_outcome_vw_eth_derived_idx (dmg_eth_derived)
inversion entry	fact_asmt_outcome_vw_lep_idx (dmg_prg_lep)
inversion entry	fact_asmt_outcome_vw_504_idx (dmg_prg_504)
inversion entry	fact_asmt_outcome_vw_tt1_idx (dmg_prg_tt1)
inversion entry	fact_asmt_outcome_vw_iep_idx (dmg_prg_iep)
inversion entry	fact_asmt_outcome_vw_sex_idx (sex)
inversion entry	fact_asmt_outcome_vw_asmt_subj_typ_idx (student_id, asmt_subject, asmt_type)
parent foreign key	dim_asmt (asmt_rec_id) Non-Identifying One To Zero or More
parent foreign key	dim_inst_hier (inst_hier_rec_id) Non-Identifying

	One To Zero or More
parent foreign key	dim_student (student_rec_id) Non-Identifying One To Zero or More

column name	data type	width	xml data type	nullabl e	CEDS Reference	description
asmt_outcome_rec_id	bigserial		xsd:integer	n	None	primary key
asmt_rec_id	bigint		xsd:integer	n	None	unique identifier of the assessment record associated with the assessment outcome
student_rec_id	bigint		xsd:integer	n	None	unique identifier of the student record associated with the assessment outcome
inst_hier_rec_id	bigint		xsd:integer	n	None	unique identifier of the inst_hier record associated with the assessment outcome
asmt_guid	varchar	255	xsd:token	n	https://ceds.ed.gov/CEDSElementDetails.aspx?TermxTopicId=21367 CEDS Element ID 000981	Identifier for assessment
student_id	varchar	40	xsd:token	n	https://ceds.ed.gov/CEDSElementDetails.aspx?TermxTopicId=20775 CEDS Element ID 001071	Identifier for student who took the assessment
state_code	varchar	2	xsd:token	n	https://ceds.ed.gov/CEDSElementDetails.aspx?TermxTopicId=19974	State code

					CEDS Element ID 000267	
district_id	varchar	40	xsd:token	n	https://ceds.ed.gov/CEDSElementDetails.aspx?TermxTopicId=20905 CEDS Element ID 000637	Identifier for student district
school_id	varchar	40	xsd:token	n	https://ceds.ed.gov/CEDSElementDetails.aspx?TermxTopicId=19831 CEDS Element ID 000191	Identifier of student school
where_taken_id	varchar	40	xsd:token	y	None	Identifier for the test location
where_taken_name	varchar	60	xsd:token	y	tps://ceds.ed.gov/CEDSElementDetails.aspx?TermxTopicId=22006 CEDS Element ID 000597	Test location name
asmt_type	varchar	32	xsd:token	n	https://ceds.ed.gov/CEDSElementDetails.aspx?TermxTopicId=21359 CEDS Element ID 000029	Type for the assessment
asmt_year	smallint		xsd:short	n	https://ceds.ed.gov/CEDSElementDetails.aspx?TermxTopicId=19847 Ceds Element ID 000243	Year for the assessment
asmt_subject	varchar	64	xsd:token	n	https://ceds.ed.gov/CEDSElementDetails.aspx?TermxTopicId=21356 CEDS Element ID 000021	Subject for the assessment

asmt_grade	varchar	10	xsd:token	n	https://ceds.ed.gov/CEDSElementDetails.aspx?TermxTopicId=21362 CEDS Element ID 000177	Grade for the assessment
enrl_grade	varchar	10	xsd:token	n	https://ceds.ed.gov/CEDSElementDetails.aspx?TermxTopicId=20749 CEDS Element ID 000100	Grade student is registered in
date_taken	varchar	8	xsd:token	n	https://ceds.ed.gov/CEDSElementDetails.aspx?TermxTopicId=21673 CEDS Element ID 000964	Date the assessment was taken
date_taken_day	smallint		xsd:short	n	None	Day portion of the assessment date
date_taken_month	smallint		xsd:short	n	None	Month portion of the assessment date
date_taken_year	smallint		xsd:short	n	None	Year portion of the assessment date
asmt_score	smallint		xsd:short	n	https://ceds.ed.gov/CEDSElementDetails.aspx?TermxTopicId=21637 CEDS Element ID 000245	Overall score for the assessment outcome
asmt_score_range_min	smallint		xsd:short	n	https://ceds.ed.gov/CEDSElementDetails.aspx?TermxTopicId=21627 CEDS Element ID 000395	Left bound of the error band
asmt_score_range_max	smallint		xsd:short	n	https://ceds.ed.gov/CEDSElementDetails.aspx?TermxTopicId=21628	Right bound of the error band

					CEDS Element ID 000396	
asmt_perf_lvl	smallint		xsd:short	n	https://ceds.ed.gov/CEDSElementDetails.aspx?TermxTopicId=20253 CEDS Element ID 000717	Performance level of the assessment outcome
asmt_claim_1_score	smallint		xsd:short	y	https://ceds.ed.gov/CEDSElementDetails.aspx?TermxTopicId=21637 CEDS Element ID 000245	Score for the assessment claim 1
asmt_claim_1_score_range_min	smallint		xsd:short	y	https://ceds.ed.gov/CEDSElementDetails.aspx?TermxTopicId=21627 CEDS Element ID 000395	Left bound of the error band for claim 1 score
asmt_claim_1_score_range_max	smallint		xsd:short	y	https://ceds.ed.gov/CEDSElementDetails.aspx?TermxTopicId=21628 CEDS Element ID 000396	Right bound of the error band for claim 1 score
asmt_claim_1_perf_lvl	smallint		xsd:short	y	https://ceds.ed.gov/CEDSElementDetails.aspx?TermxTopicId=21623 CEDS Element ID 000367	Performance level for claim 1
asmt_claim_2_score	smallint		xsd:short	y	https://ceds.ed.gov/CEDSElementDetails.aspx?TermxTopicId=21637 CEDS Element ID 000245	Score for the assessment claim 2
asmt_claim_2_score_range_min	smallint		xsd:short	y	https://ceds.ed.gov/CEDSElementDetails.aspx?TermxTopicId=21627	Left bound of the error band for claim 2 score

					CEDS Element ID 000395	
asmt_claim_2_score_range_max	smallint		xsd:short	y	https://ceds.ed.gov/CEDSElementDetails.aspx?TermxTopicId=21628 CEDS Element ID 000396	Right bound of the error band for claim 2 score
asmt_claim_2_perf_lvl	smallint		xsd:short	y	https://ceds.ed.gov/CEDSElementDetails.aspx?TermxTopicId=21623 CEDS Element ID 000367	Performance level for claim 2
asmt_claim_3_score	smallint		xsd:short	y	https://ceds.ed.gov/CEDSElementDetails.aspx?TermxTopicId=21637 CEDS Element ID 000245	Score for the assessment claim 3
asmt_claim_3_score_range_min	smallint		xsd:short	y	https://ceds.ed.gov/CEDSElementDetails.aspx?TermxTopicId=21627 CEDS Element ID 000395	Left bound of the error band for claim 3 score
asmt_claim_3_score_range_max	smallint		xsd:short	y	https://ceds.ed.gov/CEDSElementDetails.aspx?TermxTopicId=21628 CEDS Element ID 000396	Right bound of the error band for claim 3 score
asmt_claim_3_perf_lvl	smallint		xsd:short	y	https://ceds.ed.gov/CEDSElementDetails.aspx?TermxTopicId=21623 CEDS Element ID 000367	Performance level for claim 3
asmt_claim_4_score	smallint		xsd:short	y	https://ceds.ed.gov/CEDSElementDetails.aspx?TermxTopicId=21637	Score for the assessment claim 4

					CEDS Element ID 000245	
asmt_claim_4_score_range_min	smallint		xsd:short	y	https://ceds.ed.gov/CEDSElementDetails.aspx?TermxTopicId=21627 CEDS Element ID 000395	Left bound of the error band for claim 4 score
asmt_claim_4_score_range_max	smallint		xsd:short	y	https://ceds.ed.gov/CEDSElementDetails.aspx?TermxTopicId=21628 CEDS Element ID 000396	Right bound of the error band for claim 4 score
asmt_claim_4_perf_lvl	smallint		xsd:short	y	https://ceds.ed.gov/CEDSElementDetails.aspx?TermxTopicId=21623 CEDS Element ID 000367	Performance level for claim 4
sex	varchar	10	xsd:token	n	https://ceds.ed.gov/CEDSElementDetails.aspx?TermxTopicId=20811 CEDS Element ID 000255	Student sex -male/female/NOT _STATED
dmg_eth_derived	smallint		xsd:short	y	None	Derived ethnicity code 0: None, 1: Black 2: Asian 3: Hispanic (regardless if two or more) 4: American Indian 5: Pacific Islander 6: White 7: Two or more
dmg_eth_hsp	boolean		xsd:boolean	y	https://ceds.ed.gov/CEDSElementDetails.aspx?TermxTopicId=20765 CEDS Element ID 000144	Hispanic or Latino Ethnicity

dmg_eth_ami	boolean		xsd:boolean	y	https://ceds.ed.gov/CEDSElementDetails.aspx?TermxTopicId=20907 CEDS Element ID 000016	American Indian or Alaska Native Ethnicity
dmg_eth_asn	boolean		xsd:boolean	y	https://ceds.ed.gov/CEDSElementDetails.aspx?TermxTopicId=20908 CEDS Element ID 000020	Asian Ethnicity
dmg_eth_blk	boolean		xsd:boolean	y	https://ceds.ed.gov/CEDSElementDetails.aspx?TermxTopicId=20909 CEDS Element ID 000034	Black or African American Ethnicity
dmg_eth_pcf	boolean		xsd:boolean	y	https://ceds.ed.gov/CEDSElementDetails.aspx?TermxTopicId=20910 CEDS Element ID 000192	Native Hawaiian or Other Pacific Islander Ethnicity
dmg_eth_wht	boolean		xsd:boolean	y	https://ceds.ed.gov/CEDSElementDetails.aspx?TermxTopicId=20911 CEDS Element ID 000301	White Ethnicity
dmg_prg_iep	boolean		xsd:boolean	y	https://ceds.ed.gov/CEDSElementDetails.aspx?TermxTopicId=20771 CEDS Element ID 000151	Individualized Education Program
dmg_prg_lep	boolean		xsd:boolean	y	https://ceds.ed.gov/CEDSElementDetails.aspx?TermxTopicId=20783 CEDS Element ID 000180	Limited English Proficiency Status

dmg_prg_504	boolean		xsd:boolean	y	https://ceds.ed.gov/CEDSElementDetails.aspx?TermxTopicId=20810 CEDS Element ID 000249	Section 504 status
dmg_sts_ecd	boolean		xsd:boolean	y	https://ceds.ed.gov/CEDSElementDetails.aspx?TermxTopicId=20741 CEDS Element ID 000086	Economic Disadvantage Status
dmg_sts_mig	boolean		xsd:boolean	y	https://ceds.ed.gov/CEDSElementDetails.aspx?TermxTopicId=20789 CEDS Element ID 000189	Migrant Status
acc_asl_video_embed	smallint		xsd:short	n	https://ceds.ed.gov/CEDSElementDetails.aspx?TermxTopicId=21731 CEDS Element ID 000385 Code 73070	The specific accommodation necessary for the administration of the assessment using sign language video.
acc_braile_embed	smallint		xsd:short	n	https://ceds.ed.gov/CEDSElementDetails.aspx?TermxTopicId=21731 CEDS Element ID 000385 Code 00463, 03522	The specific accommodation necessary for the administration of the assessment using braille
acc_closed_captioning_embed	smallint		xsd:short	n	https://ceds.ed.gov/CEDSElementDetails.aspx?TermxTopicId=21731 CEDS Element ID 000385	The specific accommodation necessary for the administration of the assessment using closed captioning.
acc_text_to_speech_embed	smallint		xsd:short	n	https://ceds.ed.gov/CEDSElementDetails.aspx?TermxTopicId=21731	The specific accommodation necessary for the

					etails.aspx?TermxTopicId=21731 CEDS Element ID 000385	administration of the assessment using text to speech.
acc_abacus_nonembed	smallint		xsd:short	n	https://ceds.ed.gov/CEDSElementDetails.aspx?TermxTopicId=21731 CEDS Element ID 000385 Code 03528	The specific accommodation necessary for the administration of the assessment using an abacus.
acc_alterate_response_options_nonembed	smallint		xsd:short	n	https://ceds.ed.gov/CEDSElementDetails.aspx?TermxTopicId=21731 CEDS Element ID 000385	The specific accommodation necessary for the administration of the assessment using an alternate response options.
acc_calculator_nonembed	smallint		xsd:short	n	https://ceds.ed.gov/CEDSElementDetails.aspx?TermxTopicId=21731 CEDS Element ID 000385 Code 03524	The specific accommodation necessary for the administration of the assessment using a calculator.
acc_multiplication_table_nonembed	smallint		xsd:short	n	https://ceds.ed.gov/CEDSElementDetails.aspx?TermxTopicId=21731 CEDS Element ID 000385 Code 03517	The specific accommodation necessary for the administration of the assessment using multiplication table.
acc_print_on_demand_nonembed	smallint		xsd:short	n	https://ceds.ed.gov/CEDSElementDetails.aspx?TermxTopicId=21731 CEDS Element ID 000385	The specific accommodation necessary for the administration of the assessment by printing on demand.
acc_print_on_demand_items_nonembed	smallint		xsd:short	n	https://ceds.ed.gov/CEDSElementDetails.aspx?TermxTopicId=21731	The specific accommodation

					etails.aspx?TermId=21731 CEDS Element ID 000385	necessary for the administration of the assessment by printing on demand for items.
acc_read_aloud_nonembed	smallint		xsd:short	n	https://cededs.ed.gov/CEDSElementDetails.aspx?TermId=21731 CEDS Element ID 000385 Code 03559, 03564	The specific accommodation necessary for the administration of the assessment by reading aloud.
acc_scribe_nonembed	smallint		xsd:short	n	https://cededs.ed.gov/CEDSElementDetails.aspx?TermId=21731 CEDS Element ID 000385	The specific accommodation necessary for the administration of the assessment by the assistance of a scribe.
acc_speech_to_text_nonembed	smallint		xsd:short	n	https://cededs.ed.gov/CEDSElementDetails.aspx?TermId=21731 CEDS Element ID 000385	The specific accommodation necessary for the administration of the assessment by the assistance of speech to text.
acc_streamline_mode	smallint		xsd:short	n	https://cededs.ed.gov/CEDSElementDetails.aspx?TermId=21731 CEDS Element ID 000385	The specific accommodation necessary for the administration of the assessment by the assistance of a streamline mode.
acc_noise_buffer_nonembed	smallint		xsd:short	n	https://cededs.ed.gov/CEDSElementDetails.aspx?TermId=21731 CEDS Element ID 000385	The specific accommodation necessary for the administration of the assessment by the assistance of a noise buffer.
from_date	varchar	8	xsd:token	n	None	Date the record was added to the warehouse
to_date	varchar	8	xsd:token	y	None	Date the record became inactive

rec_status	varchar	1	xsd:token	n	None	Record Status. C for Created, I for inactive, D for deleted
batch_guid	varchar	36	xsd:token	n	None	internal batch GUID of the import job that inserted the record
asmt_status	varchar	2	xsd:token	n	None	Assessment Status